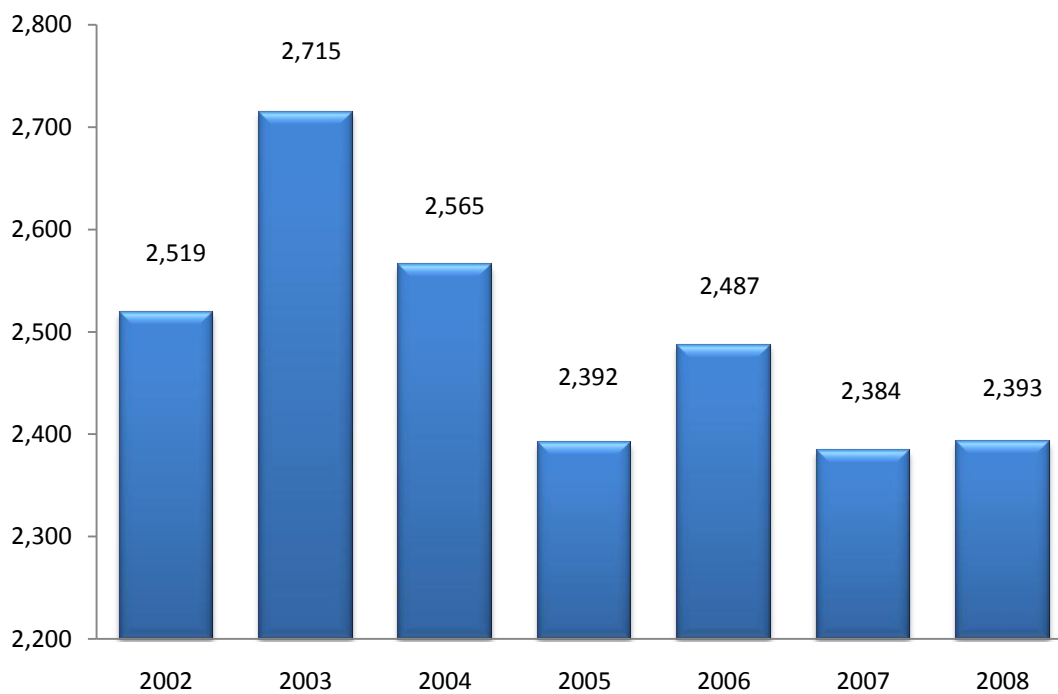


**Table 2.1 Headcount Enrollment by Level and Status  
Fall 2002-Fall 2008**

Fall	Undergraduates		Graduates	Total
	Full-time	Part-time	Total	Headcount
<b>2002</b>	1,128	1,110	281	2,519
<b>2003</b>	1,249	1,187	279	2,715
<b>2004</b>	1,231	1,121	213	2,565
<b>2005</b>	1,227	958	207	2,392
<b>2006</b>	1,263	1,009	215	2,487
<b>2007</b>	1,267	909	208	2,384
<b>2008</b>	1,385	827	181	2,393

**Figure 2.1 Total Headcount Enrollment  
Fall 2002-Fall 2008**



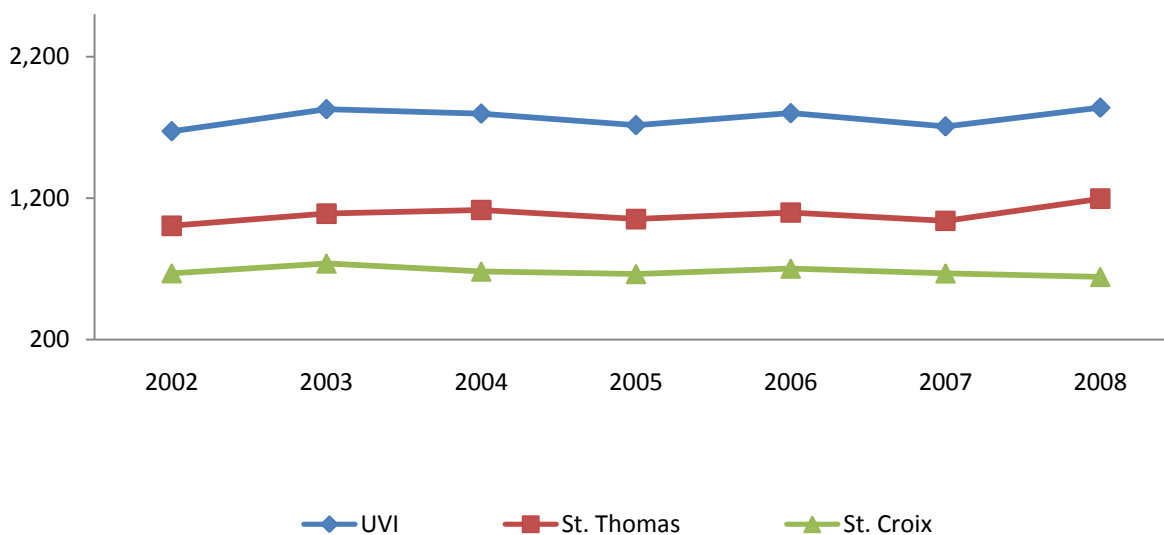
**Table 2.2 Undergraduate Full-Time Equivalent Enrollment (FTE)\* by Campus  
Fall 2002-Fall 2008**

Fall	UVI FTE			St. Thomas FTE			St. Croix FTE		
	All	FT **	PT***	All	FT	PT	All	FT	PT
2002	1,673	1,128	545	1,004	718	286	669	410	259
2003	1,828	1,249	579	1,090	792	298	738	457	281
2004	1,797	1,231	566	1,116	816	300	681	415	266
2005	1,716	1,227	489	1,052	807	245	664	420	244
2006	1,800	1,263	537	1,098	840	258	702	423	279
2007	1,707	1,267	440	1,039	834	205	668	433	235
2008	1,839	1,385	454	1,196	947	249	643	438	205

\*FTE represents undergraduate full-time equivalent and is calculated by dividing the number of credit hours for part-time students by 12 added to the number of full-time students.

\*\* Full-time, \*\*\* Part-time

**Figure 2.2 Undergraduate Full-Time Equivalent by Campus  
Fall 2002-Fall 2008**



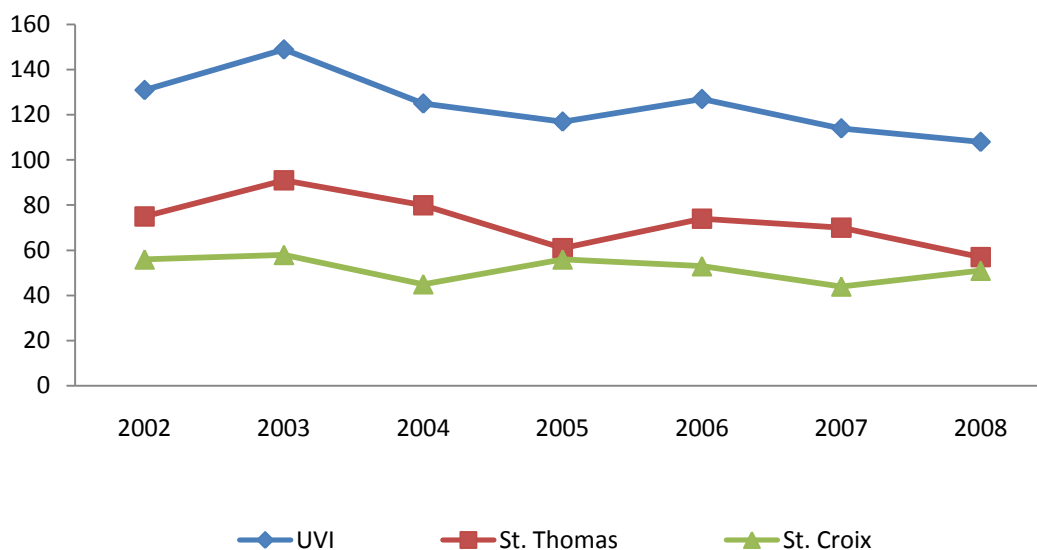
**Table 2.3 Graduate Full-Time Equivalent Enrollment (FTE)\* by Campus  
Fall 2002-Fall 2008**

Fall	UVI FTE			St. Thomas FTE			St. Croix FTE		
	All	FT**	PT***	All	FT	PT	All	FT	PT
2002	131	21	110	75	10	65	56	11	45
2003	149	34	115	91	20	71	58	14	44
2004	125	27	98	80	21	59	45	6	39
2005	117	36	81	61	23	38	56	13	43
2006	127	30	97	74	19	55	53	11	42
2007	114	29	85	70	24	46	44	5	39
2008	108	45	63	57	30	27	51	15	36

\*FTE represents undergraduate full-time equivalent and is calculated by dividing the number of credit hours for part-time students by 9 added to the number of full-time students.

\*\* Full-time, \*\*\*Part-time

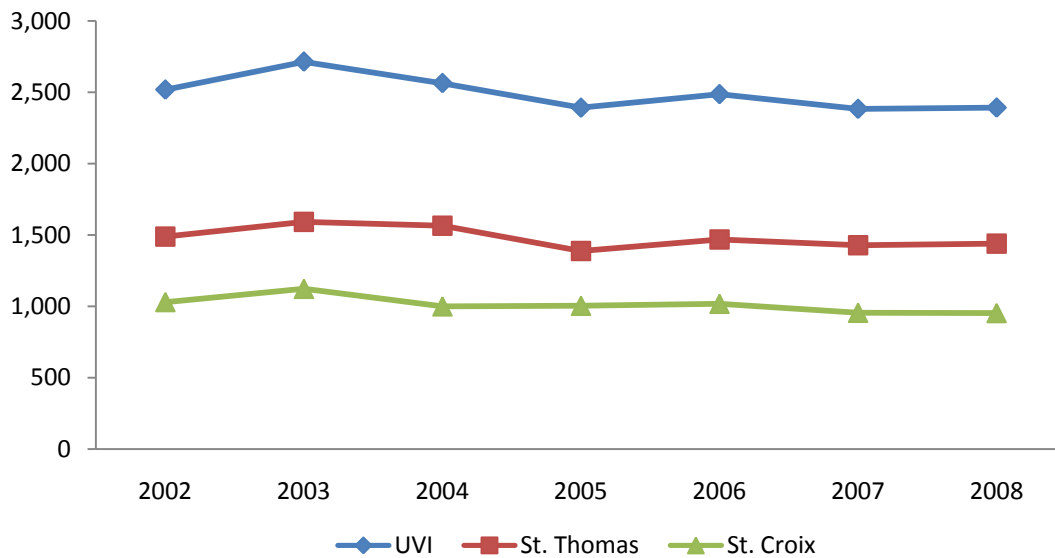
**Figure 2.3 Graduate Full-Time Equivalent by Campus  
Fall 2002-Fall 2008**



**Table 2.4 Headcount Enrollment by Campus  
Fall 2002-Fall 2008**

Fall	Total (UVI)	St. Thomas		St. Croix	
	Headcount	Headcount	Percent	Headcount	Percent
2002	2,519	1,489	59	1,030	41
2003	2,715	1,592	59	1,123	41
2004	2,565	1,565	61	1,000	39
2005	2,392	1,388	58	1,004	42
2006	2,487	1,469	59	1,018	41
2007	2,384	1,429	60	955	40
2008	2,393	1,440	60	953	40

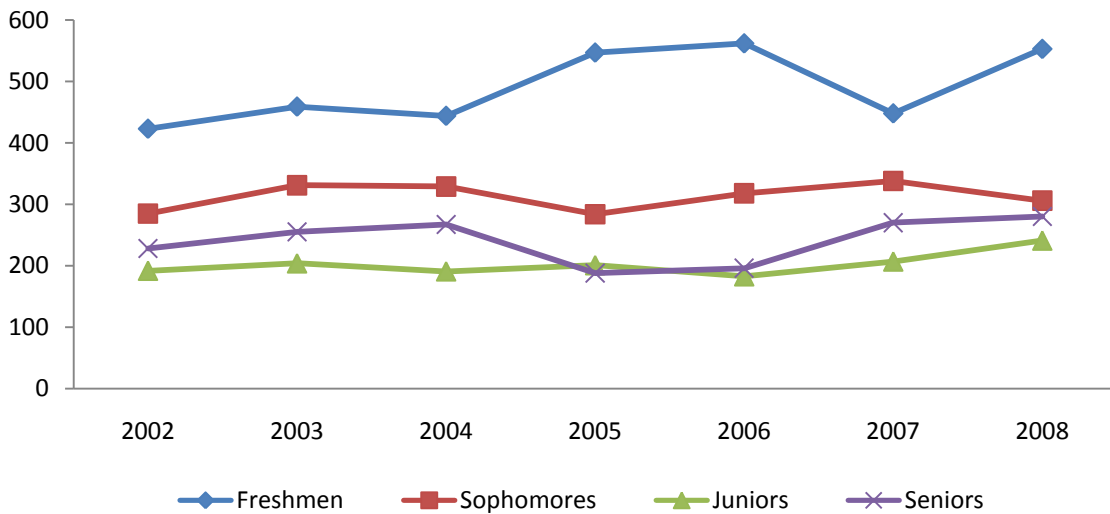
**Figure 2.4 Headcount Enrollment by Campus  
Fall 2002- Fall 2008**



**Table 2.5 Full-Time Undergraduate Enrollment by Class  
Fall 2002-Fall 2008**

Fall	Total	Freshmen		Sophomores		Juniors		Seniors		Unclassified	
		Count	Percent	Count	Percent	Count	Percent	Count	Percent	Count	Percent
<b>2002</b>	1,128	423	38	285	25	192	17	228	20	0	0
<b>2003</b>	1,249	459	37	331	27	204	16	255	20	0	0
<b>2004</b>	1,231	444	36	329	27	191	16	267	22	0	0
<b>2005</b>	1,227	547	45	284	23	201	16	188	15	7	1
<b>2006</b>	1,263	562	44	318	25	183	14	196	16	4	0
<b>2007</b>	1,267	448	35	338	27	207	16	270	21	4	0
<b>2008</b>	1,385	553	40	306	22	241	17	280	20	5	0

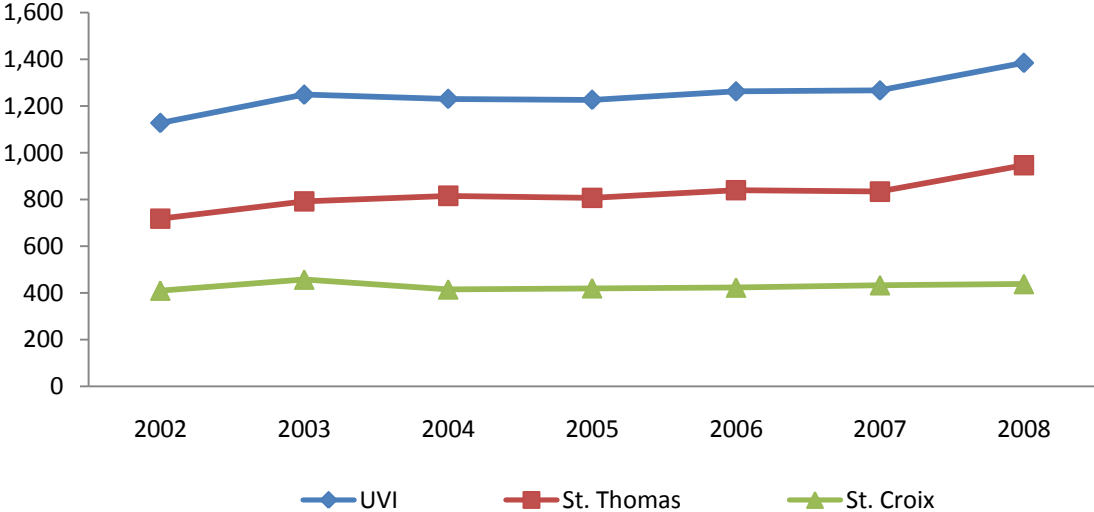
**Figure 2.5 UVI Full-Time Undergraduate Enrollment by Class  
Fall 2002- Fall 2008**



**Table 2.6 Full-Time Undergraduate Enrollment by Campus  
Fall 2002-Fall 2008**

Fall	Total (UVI)	St. Thomas		St. Croix	
	Count	Count	Percent	Count	Percent
2002	1,128	718	64	410	36
2003	1,249	792	63	457	37
2004	1,231	816	66	415	34
2005	1,227	807	66	420	34
2006	1,263	840	67	423	33
2007	1,267	834	66	433	34
2008	1,385	947	68	438	32

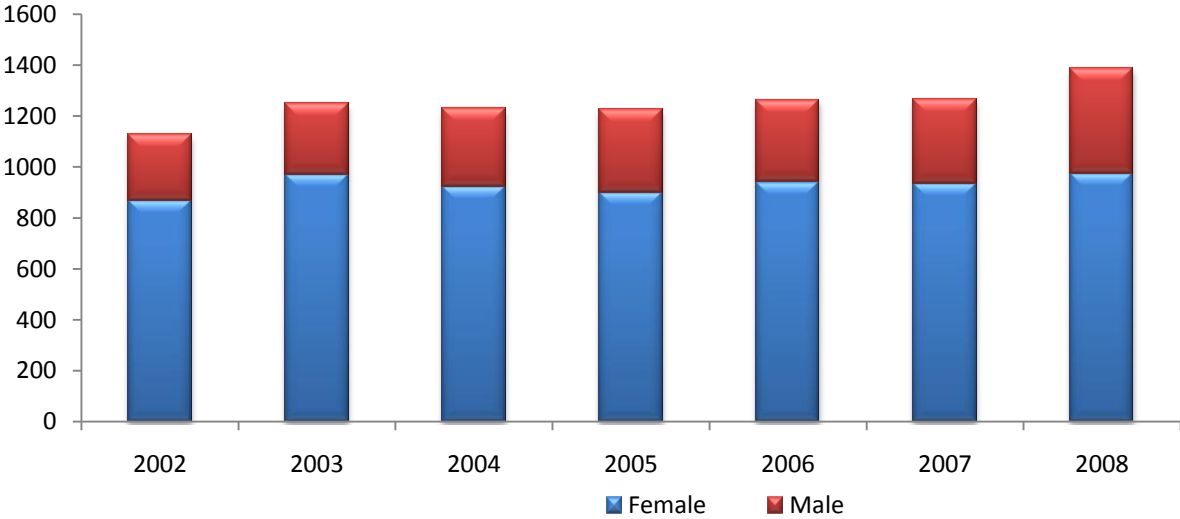
**Figure 2.6 Full-Time Undergraduate Enrollment by Campus  
Fall 2002-Fall 2008**



**Table 2.7 Full-Time Undergraduate Enrollment by Gender  
Fall 2002-Fall 2008**

Fall	Total	Female		Male	
	Count	Count	Percent	Count	Percent
2002	1,128	868	77	260	23
2003	1,249	971	78	278	22
2004	1,231	922	75	309	25
2005	1,227	901	73	326	27
2006	1,263	941	75	322	25
2007	1,267	933	74	334	26
2008	1,385	977	71	408	29

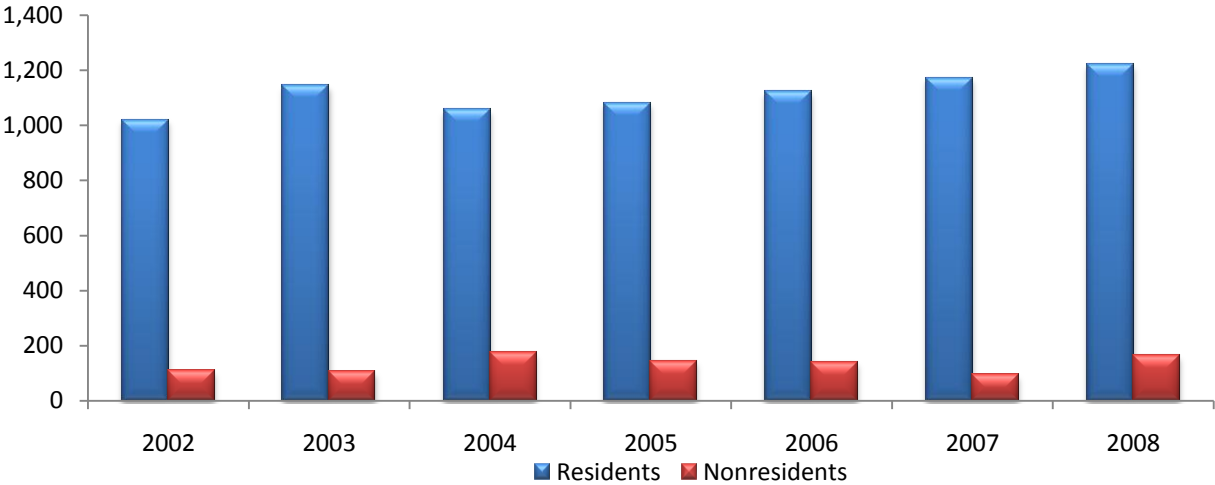
**Figure 2.7 UVI Full-Time Undergraduate Enrollment by Gender  
Fall 2002-Fall 2008**



**Table 2.8 Full-Time Undergraduate Enrollment by Residency  
Fall 2002-Fall 2008**

Fall	Total	Residents		Nonresidents	
	Full-time	Count	Percent	Count	Percent
2002	1,128	1,020	90	108	10
2003	1,249	1,143	92	106	8
2004	1,231	1,057	86	174	14
2005	1,227	1,082	88	145	12
2006	1,263	1,123	89	140	11
2007	1,267	1,172	93	95	7
2008	1,385	1,221	88	164	12

**Figure 2.8 UVI Full-Time Undergraduate Enrollment by Residency  
Fall 2002-Fall 2008**





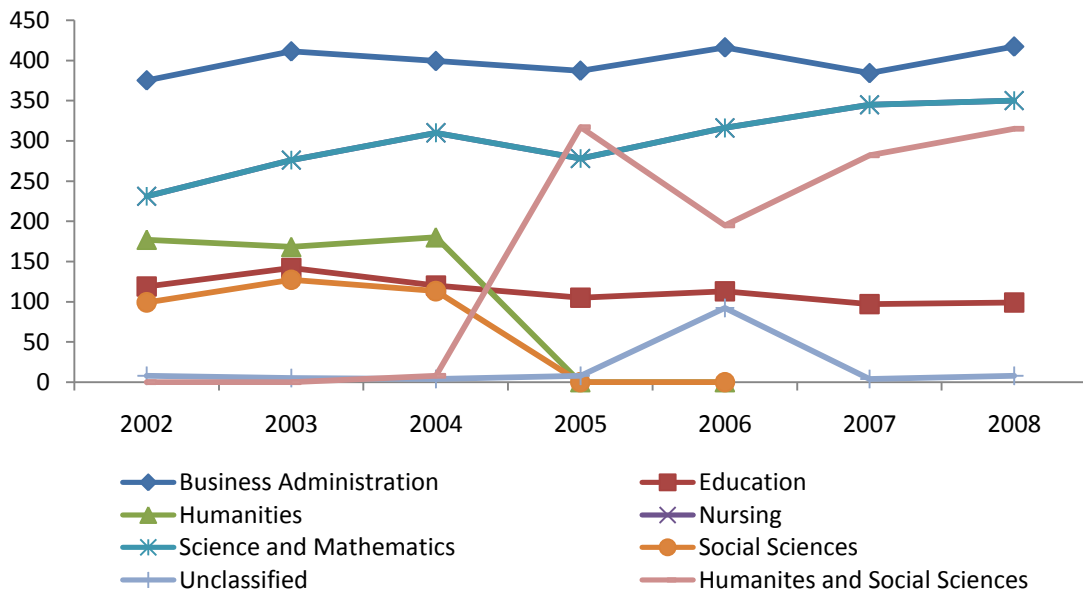
**Table 2.9 Full-Time Undergraduate Enrollment by Division  
Fall 2002-Fall 2008**

Division	2002	2003	2004	2005	2006	2007	2008
Business	375	411	399	387	416	384	417
Education	119	142	120	105	113	97	99
Humanities	177	168	180	*	*	*	*
Nursing	119	120	105	132	131	155	196
Science and Mathematics	231	276	310	278	316	345	350
Social Sciences	99	127	113	*	*	*	*
Humanities and Social Sciences*	*	*	8	317	195	282	315
Unclassified**	8	5	4	8	92	4	8
<b>Total</b>	<b>1,128</b>	<b>1,249</b>	<b>1,239</b>	<b>1,227</b>	<b>1,263</b>	<b>1,267</b>	<b>1,385</b>

\* As of Fall 2005, the Social Sciences and Humanities Division have been combined.

\*\* Unclassified includes undecided and no major code assigned.

**Figure 2.9 UVI Full-Time Undergraduate Enrollment by Division  
Fall 2002-Fall 2008**



**Table 2.10 Full-Time Undergraduate Enrollment by Division and Major  
Fall 2003-Fall 2008**

<b>Division</b>	<b>2003</b>	<b>2004</b>	<b>2005</b>	<b>2006</b>	<b>2007</b>	<b>2008</b>
<b>BUSINESS</b>						
Accounting	111	121	122	119	110	115
Business Administration	214	201	202	238	218	257
Business Management	34	27	27	27	26	27
Computer Information Systems	46	46	32	26	23	17
Hotel and Restaurant Management	7	5	3	4	7	1
Office Assistance/Office Systems	2	0	1	2	*	*
<b>EDUCATION</b>						
Elementary Education	129	104	93	89	83	70
Vocational Education	6	13	*	*	*	*
Inclusive Early Childhood Education	0	0	12	24	14	29
<b>HUMANITIES AND SOCIAL SCIENCES</b>						
Communication	0	0	10	18	14	25
Criminal Justice	*	*	*	*	1	25
English	24	21	27	20	28	23
Humanities	20	13	11	10	14	6
Music; Music Education	12	13	8	10	8	9
Police Science and Administration	11	8	11	20	9	11
Psychology	86	81	81	74	74	87
Social Sciences	25	21	29	25	31	24
Social Work	3	7	12	9	12	10
Speech Communication and Theater	14	15	4	3	4	2
<b>NURSING</b>						
Nursing	103	88	109	112	117	144
Nursing Education	19	19	23	19	38	52
<b>SCIENCE AND MATHEMATICS</b>						
Applied Mathematics	22	21	24	31	35	39
Biology	110	126	94	125	137	130
Chemistry	15	16	17	19	21	21
Computer Science	71	78	71	60	65	63
Marine Biology	22	25	23	30	26	26
Mathematics	13	21	18	19	22	20
Physics	2	0	1	0	1	1
Processed Technology	18	21	30	32	38	50

\*Program not offered