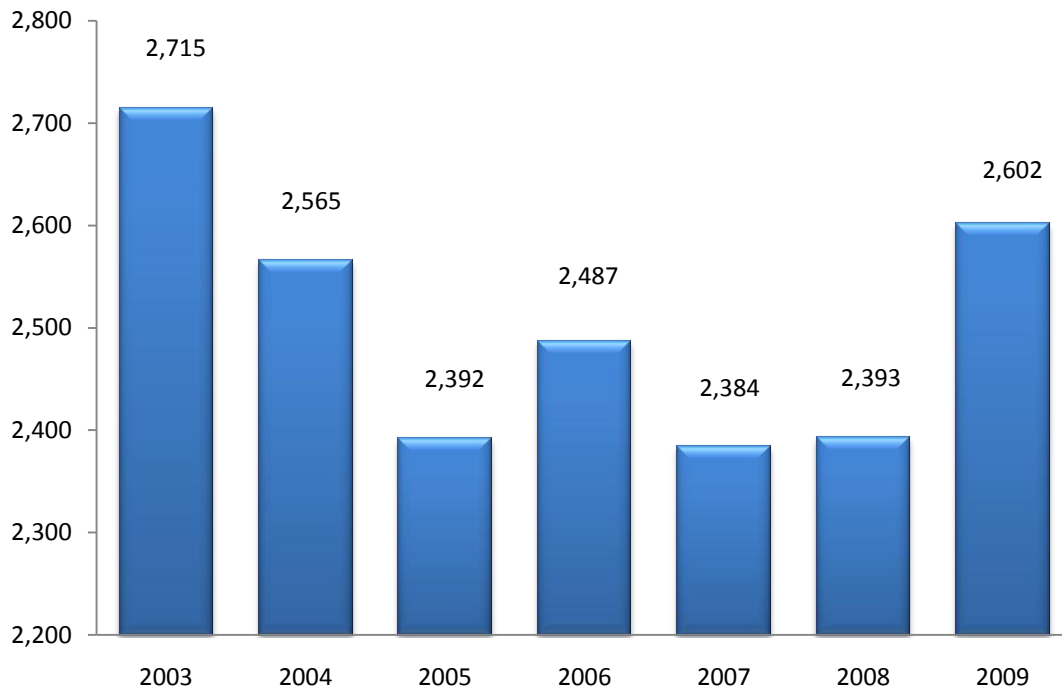


**Table 2.1 Headcount Enrollment by Level and Status  
Fall 2003-Fall 2009**

Fall	Undergraduate		Graduate	Total
	Full-time	Part-time	Total	Headcount
<b>2003</b>	1,249	1,187	279	2,715
<b>2004</b>	1,231	1,121	213	2,565
<b>2005</b>	1,227	958	207	2,392
<b>2006</b>	1,263	1,009	215	2,487
<b>2007</b>	1,267	909	208	2,384
<b>2008</b>	1,385	827	181	2,393
<b>2009</b>	1,542	889	171	2,602

**Figure 2.1 Total Headcount Enrollment  
Fall 2003-2009**



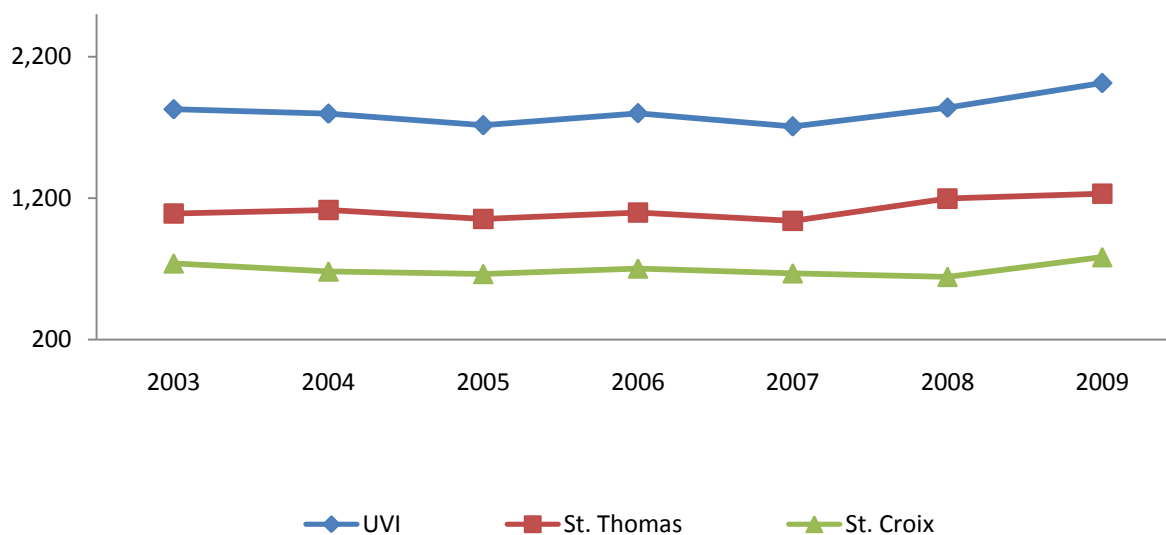
**Table 2.2 Undergraduate Full-Time Equivalent Enrollment (FTE)\* by Campus  
Fall 2003-Fall 2009**

Fall	UVI FTE			St. Thomas FTE			St. Croix FTE		
	All	FT **	PT***	All	FT	PT	All	FT	PT
2003	1,828	1,249	579	1,090	792	298	738	457	281
2004	1,797	1,231	566	1,116	816	300	681	415	266
2005	1,716	1,227	489	1,052	807	245	664	420	244
2006	1,800	1,263	537	1,098	840	258	702	423	279
2007	1,707	1,267	440	1,039	834	205	668	433	235
2008	1,839	1,385	454	1,196	947	249	643	438	205
2009	2,013	1,542	471	1,231	996	235	782	546	236

\*FTE represents undergraduate full-time equivalent and is calculated by dividing the number of credit hours for part-time students by 12 added to the number of full-time students.

\*\* Full-time, \*\*\* Part-time

**Figure 2.2 Undergraduate Full-Time Equivalent by Campus  
Fall 2003-2009**



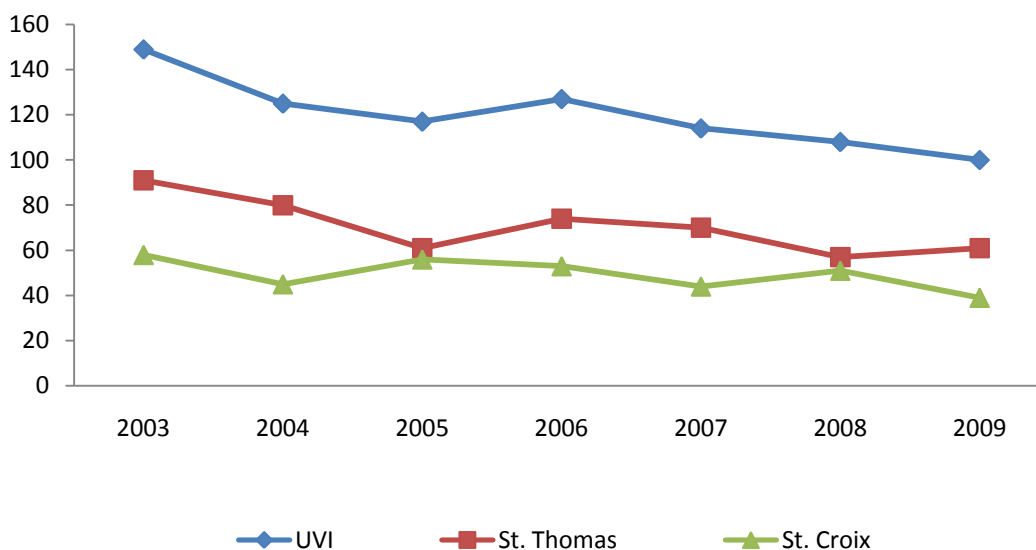
**Table 2.3 Graduate Full-Time Equivalent Enrollment (FTE)\* by Campus  
Fall 2003-Fall 2009**

Fall	UVI FTE			St. Thomas FTE			St. Croix FTE		
	All	FT**	PT***	All	FT	PT	All	FT	PT
2003	149	34	115	91	20	71	58	14	44
2004	125	27	98	80	21	59	45	6	39
2005	117	36	81	61	23	38	56	13	43
2006	127	30	97	74	19	55	53	11	42
2007	114	29	85	70	24	46	44	5	39
2008	108	45	63	57	30	27	51	15	36
2009	100	38	62	61	31	30	39	7	32

\*FTE represents undergraduate full-time equivalent and is calculated by dividing the number of credit hours for part-time students by 9 added to the number of full-time students.

\*\* Full-time, \*\*\*Part-time

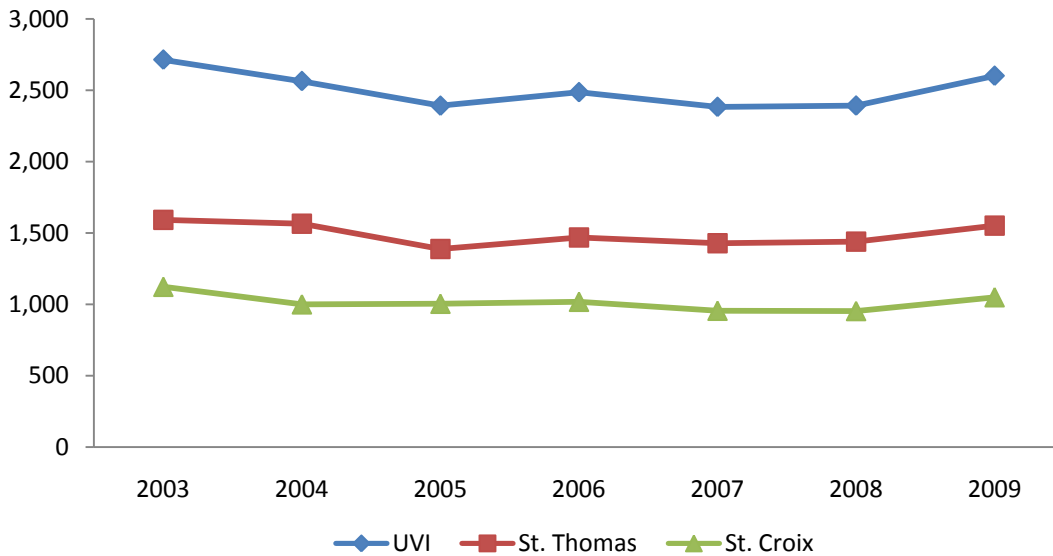
**Figure 2.3 Graduate Full-Time Equivalent by Campus  
Fall 2003-2009**



**Table 2.4 Headcount Enrollment by Campus and Percentage  
Fall 2003-Fall 2009**

Fall	Total (UVI)	St. Thomas		St. Croix	
	Headcount	Headcount	Percentage	Headcount	Percentage
2003	2,715	1,592	59	1,123	41
2004	2,565	1,565	61	1,000	39
2005	2,392	1,388	58	1,004	42
2006	2,487	1,469	59	1,018	41
2007	2,384	1,429	60	955	40
2008	2,393	1,440	60	953	40
2009	2,602	1,552	60	1,050	40

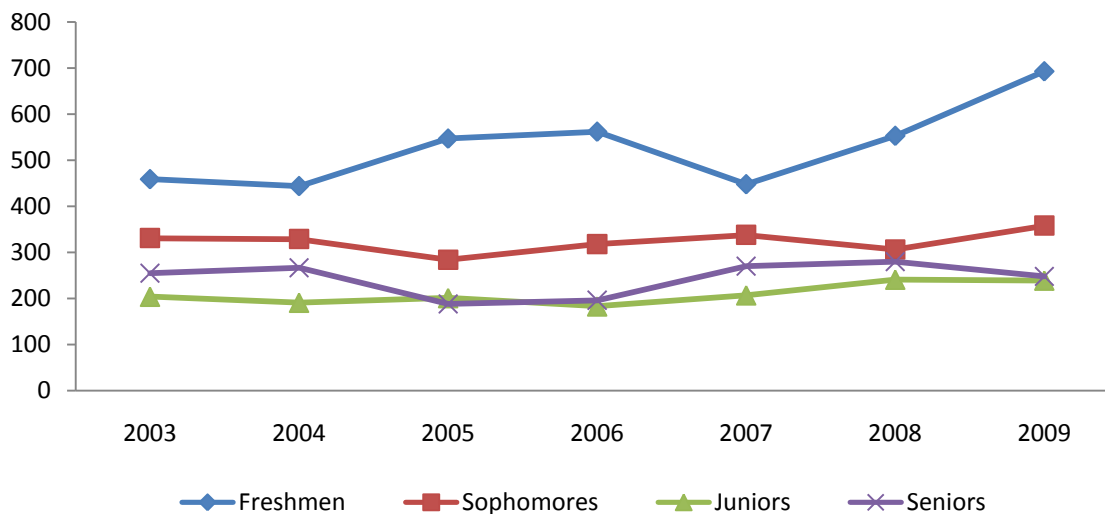
**Figure 2.4 Headcount Enrollment by Campus  
Fall 2003-2009**



**Table 2.5 Full-Time Undergraduate Enrollment by Class and Percent  
Fall 2003-Fall 2009**

Fall	Total	Freshmen		Sophomores		Juniors		Seniors		Unclassified	
		Count	Percent	Count	Percent	Count	Percent	Count	Percent	Count	Percent
2003	1,249	459	37	331	27	204	16	255	20	0	0
2004	1,231	444	36	329	27	191	16	267	22	0	0
2005	1,227	547	45	284	23	201	16	188	15	7	1
2006	1,263	562	44	318	25	183	14	196	16	4	0
2007	1,267	448	35	338	27	207	16	270	21	4	0
2008	1,385	553	40	306	22	241	17	280	20	5	0
2009	1,542	693	45	358	23	239	15	248	16	4	0

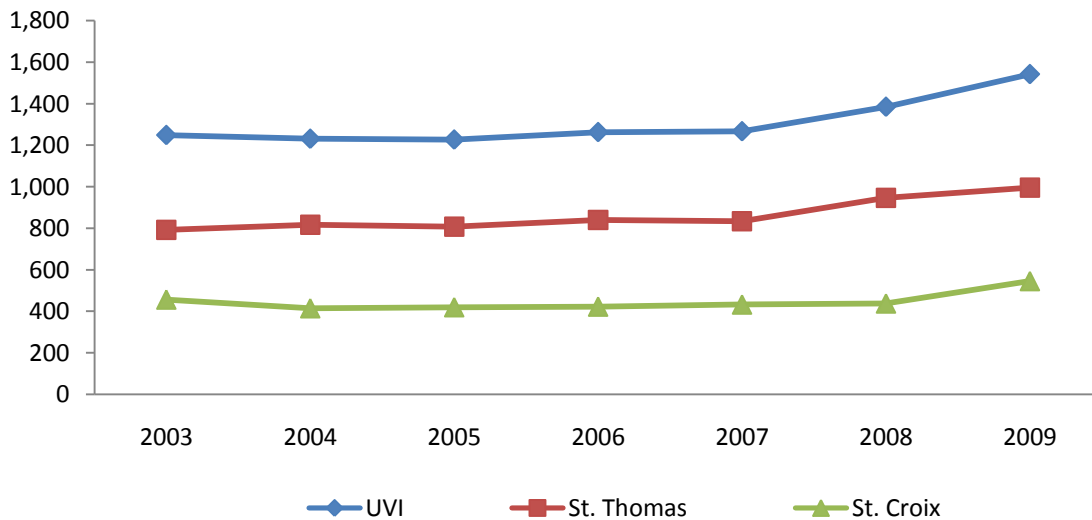
**Figure 2.5 UVI Full-Time Undergraduate Enrollment by Class  
Fall 2003-2009**



**Table 2.6 Full-Time Undergraduate Enrollment by Campus and Percentage  
Fall 2003-Fall 2009**

Fall	Total (UVI)	St. Thomas		St. Croix	
	Count	Count	Percentage	Count	Percentage
2003	1,249	792	63	457	37
2004	1,231	816	66	415	34
2005	1,227	807	66	420	34
2006	1,263	840	67	423	33
2007	1,267	834	66	433	34
2008	1,385	947	68	438	32
2009	1,542	996	65	546	35

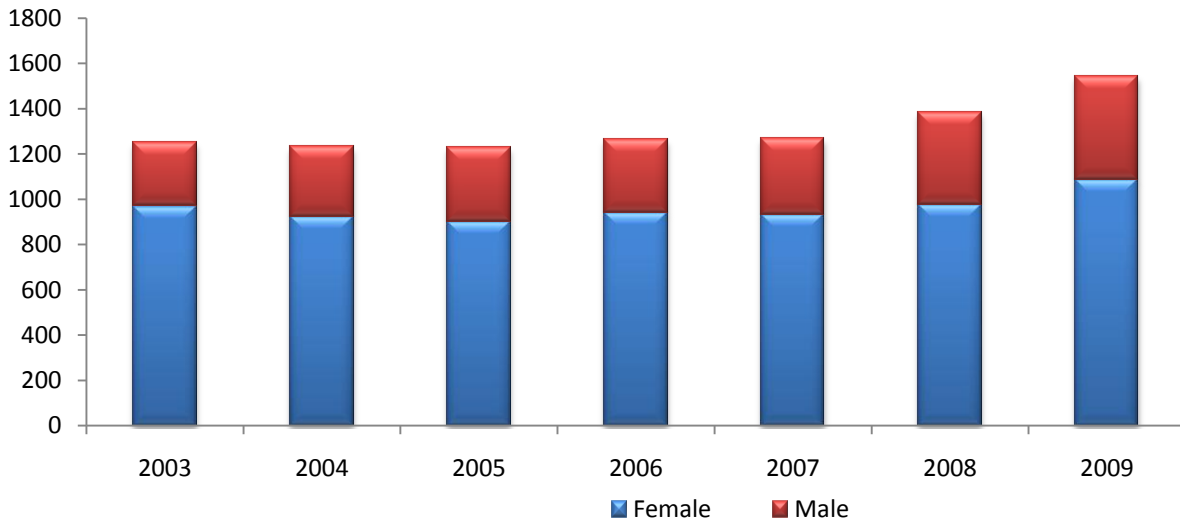
**Figure 2.6 Full-Time Undergraduate Enrollment by Campus  
Fall 2003-2009**



**Table 2.7 Full-Time Undergraduate Enrollment by Gender and Percentage  
Fall 2003-Fall 2009**

Fall	Total	Female		Male	
	Count	Count	Percentage	Count	Percentage
<b>2003</b>	1,249	971	78	278	22
<b>2004</b>	1,231	922	75	309	25
<b>2005</b>	1,227	901	73	326	27
<b>2006</b>	1,263	941	75	322	25
<b>2007</b>	1,267	933	74	334	26
<b>2008</b>	1,385	977	71	408	29
<b>2009</b>	1,542	1,087	70	455	30

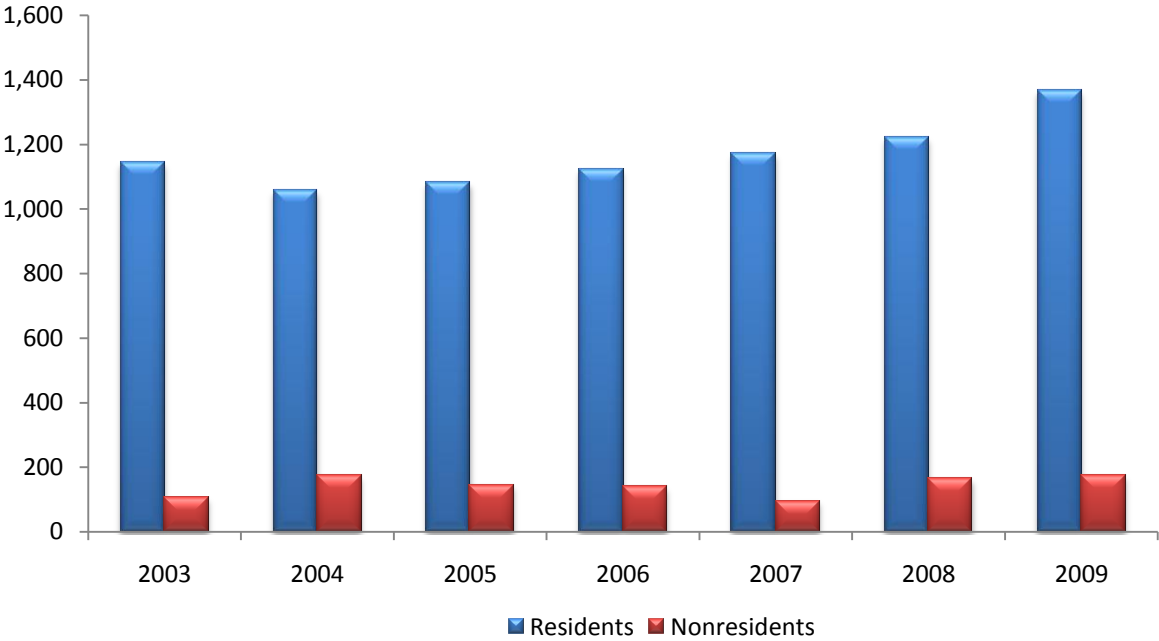
**Figure 2.7 UVI Full-Time Undergraduate Enrollment by Gender  
Fall 2003-2009**



**Table 2.8 Full-Time Undergraduate Enrollment by Residency and Percentage  
Fall 2003-Fall 2009**

Fall	Total	Residents		Nonresidents	
	Full-time	Count	Percentage	Count	Percentage
2003	1,249	1,143	92	106	8
2004	1,231	1,057	86	174	14
2005	1,227	1,082	88	145	12
2006	1,263	1,123	89	140	11
2007	1,267	1,172	93	95	7
2008	1,385	1,221	88	164	12
2009	1,542	1,367	89	175	11

**Figure 2.8 UVI Full-Time Undergraduate Enrollment by Residency  
Fall 2003-2009**





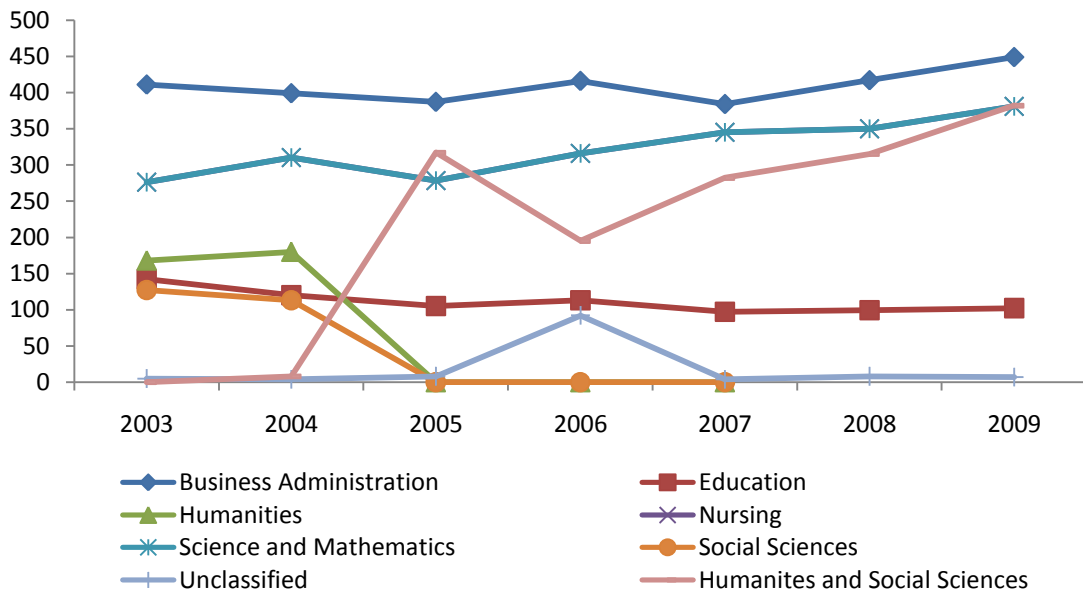
**Table 2.9 Full-Time Undergraduate Enrollment by Division  
Fall 2003-Fall 2009**

Division	2003	2004	2005	2006	2007	2008	2009
Business	411	399	387	416	384	417	449
Education	142	120	105	113	97	99	102
Humanities	168	180	*	*	*	*	*
Nursing	120	105	132	131	155	196	221
Science and Mathematics	276	310	278	316	345	350	381
Social Sciences	127	113	*	*	*	*	*
Humanities and Social Sciences*	*	8	317	195	282	315	382
Unclassified**	5	4	8	92	4	8	7
<b>Total</b>	<b>1,249</b>	<b>1,239</b>	<b>1,227</b>	<b>1,263</b>	<b>1,267</b>	<b>1,385</b>	<b>1,542</b>

\* As of Fall 2005, the Social Sciences and Humanities Division have been combined.

\*\* Unclassified includes undecided and no major code assigned.

**Figure 2.9 UVI Full-Time Undergraduate Enrollment by Division  
Fall 2003-2009**



**Table 2.10 Full-Time Undergraduate Enrollment by Division and Major  
Fall 2003-Fall 2009**

Division	2003	2004	2005	2006	2007	2008	2009
<b>BUSINESS</b>							
Accounting	111	121	122	119	110	115	116
Business Administration	214	201	202	238	218	257	287
Business Management	34	27	27	27	26	27	21
Computer Information Systems	46	46	32	26	23	17	25
Hotel and Restaurant Management	7	5	3	4	7	1	0
Office Assistance/Office Systems	2	0	1	2	*	*	*
<b>EDUCATION</b>							
Elementary Education	129	104	93	89	83	70	69
Vocational Education	6	13	*	*	*	*	*
Inclusive Early Childhood Education	0	0	12	24	14	29	66
<b>HUMANITIES AND SOCIAL SCIENCES</b>							
Communication	0	0	10	18	14	25	26
Criminal Justice	*	*	*	*	1	25	60
English	24	21	27	20	28	23	14
Humanities	20	13	11	10	14	6	12
Music; Music Education	12	13	8	10	8	9	17
Police Science and Administration	11	8	11	20	9	11	6
Psychology	86	81	81	74	74	87	96
Social Sciences	25	21	29	25	31	24	22
Social Work	3	7	12	9	12	10	12
Speech Communication and Theater	14	15	4	3	4	2	2
<b>NURSING</b>							
Nursing	103	88	109	112	117	144	148
Nursing Education	19	19	23	19	38	52	73
<b>SCIENCE AND MATHEMATICS</b>							
Applied Mathematics	22	21	24	31	35	39	42
Biology	110	126	94	125	137	130	126
Chemistry	15	16	17	19	21	21	26
Computer Science	71	78	71	60	65	63	80
Marine Biology	22	25	23	30	26	26	22
Mathematics	13	21	18	19	22	20	21
Physics	2	0	1	0	1	1	0
Process Technology	18	21	30	32	38	50	64

\*Program not offered