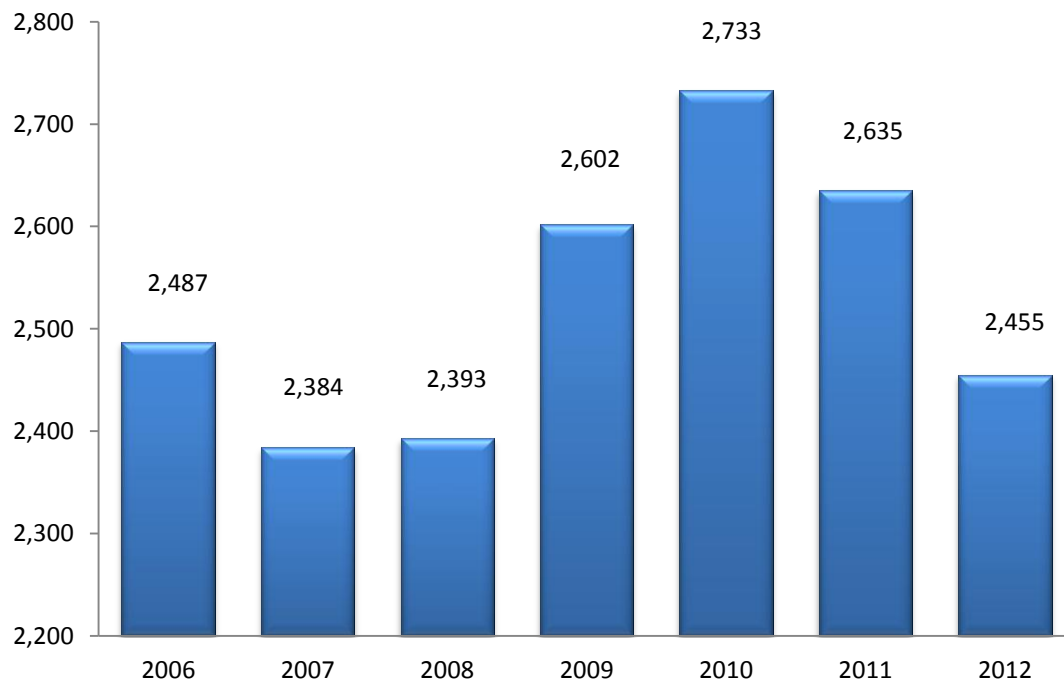


**Table 2.1 Headcount Enrollment by Level and Status  
Fall 2006-Fall 2012**

Fall	Undergraduate		Graduate	Total
	Full-time	Part-time	Total	Headcount
2006	1,263	1,009	215	2,487
2007	1,267	909	208	2,384
2008	1,385	827	181	2,393
2009	1,542	889	171	2,602
2010	1,601	919	213	2,733
2011	1,453	967	215	2,635
2012	1,423	848	184	2,455

**Figure 2.1 Total Headcount Enrollment  
Fall 2006-2012**



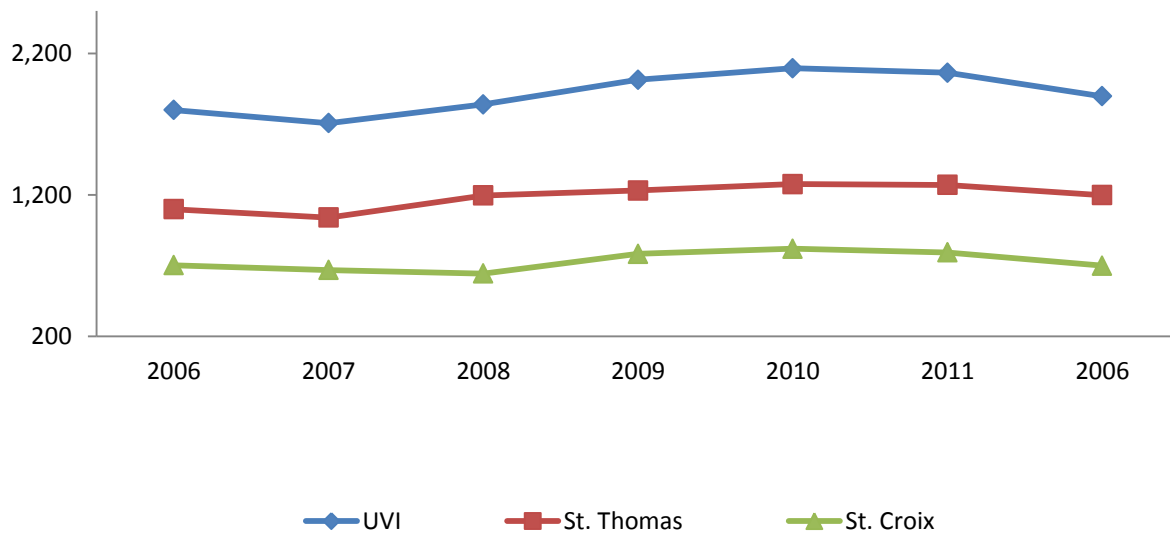
**Table 2.2 Undergraduate Full-Time Equivalent Enrollment (FTE)\* by Campus  
Fall 2006-Fall 2012**

Fall	UVI FTE			St. Thomas FTE			St. Croix FTE		
	All	FT **	PT***	All	FT	PT	All	FT	PT
2006	1,800	1,263	537	1,098	840	258	702	423	279
2007	1,707	1,267	440	1,039	834	205	668	433	235
2008	1,839	1,385	454	1,196	947	249	643	438	205
2009	2,013	1,542	471	1,231	996	235	782	546	236
2010	2,095	1,601	494	1,276	1,030	246	819	571	248
2011	2,063	1,513	550	1,270	995	275	793	518	275
2006	1,897	1,423	474	1,198	948	250	699	475	224

\*FTE represents undergraduate full-time equivalent and is calculated by dividing the number of credit hours for part-time students by 12 added to the number of full-time students.

\*\*Full-time, \*\*\*Part-time

**Figure 2.2 Undergraduate Full-Time Equivalent by Campus  
Fall 2006-2012**



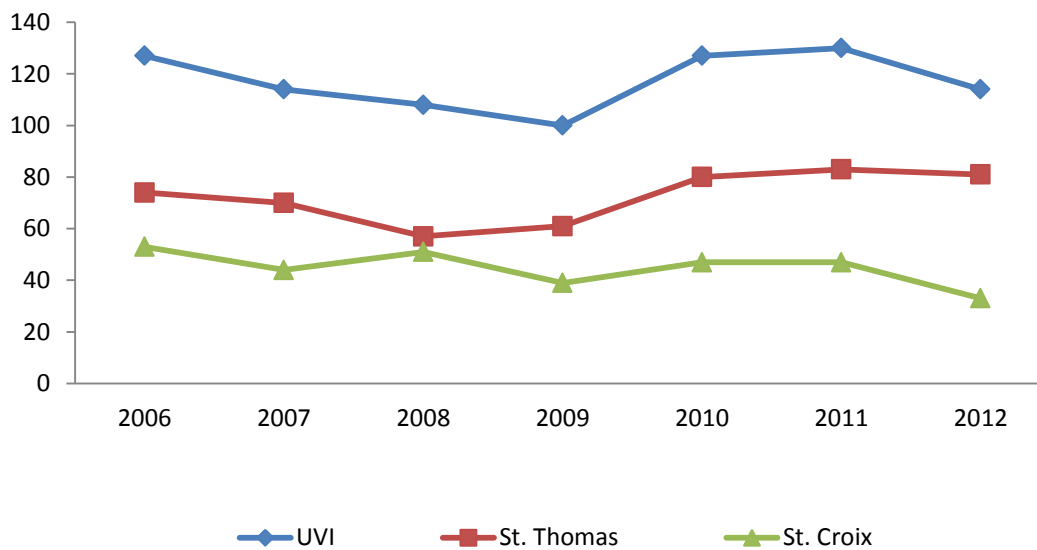
**Table 2.3 Graduate Full-Time Equivalent Enrollment (FTE)\* by Campus  
Fall 2006-Fall 2012**

Fall	UVI FTE			St. Thomas FTE			St. Croix FTE		
	All	FT**	PT***	All	FT	PT	All	FT	PT
2006	127	30	97	74	19	55	53	11	42
2007	114	29	85	70	24	46	44	5	39
2008	108	45	63	57	30	27	51	15	36
2009	100	38	62	61	31	30	39	7	32
2010	127	54	73	80	37	43	47	17	30
2011	130	60	70	83	45	38	47	15	32
2012	114	50	64	81	43	38	33	7	26

\*FTE represents undergraduate full-time equivalent and is calculated by dividing the number of credit hours for part-time students by 9 added to the number of full-time students.

\*\* Full-time, \*\*\*Part-time

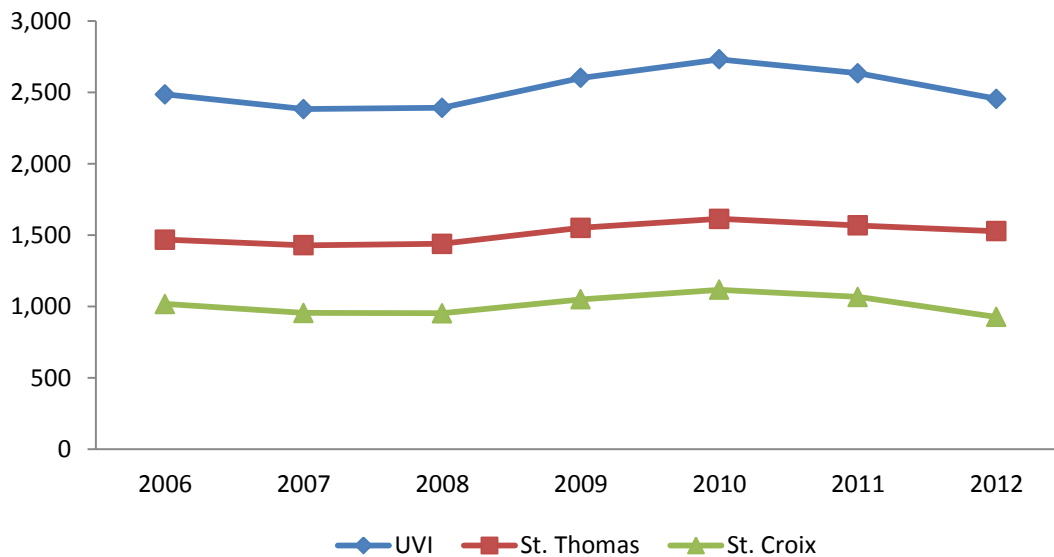
**Figure 2.3 Graduate Full-Time Equivalent by Campus  
Fall 2006-2012**



**Table 2.4 Headcount Enrollment by Campus and Percentage  
Fall 2006-Fall 2012**

Fall	Total (UVI)	St. Thomas		St. Croix	
	Headcount	Headcount	Percentage	Headcount	Percentage
2006	2,487	1469	59	1018	41
2007	2,384	1429	60	955	40
2008	2,393	1440	60	953	40
2009	2,602	1552	60	1050	40
2010	2,733	1615	59	1118	41
2011	2,635	1568	60	1067	40
2012	2,455	1528	62	927	38

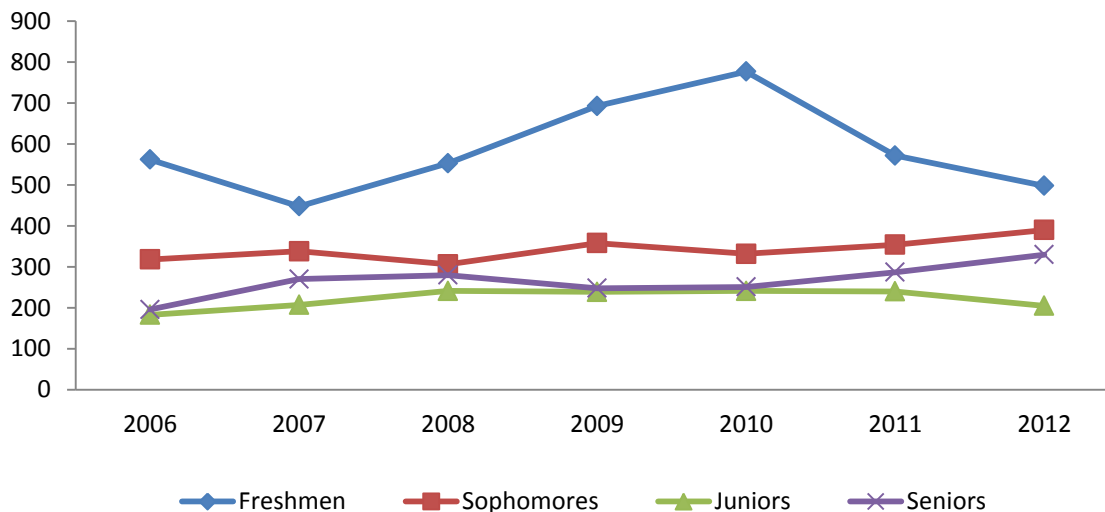
**Figure 2.4 Headcount Enrollment by Campus  
Fall 2006-2012**



**Table 2.5 Full-Time Undergraduate Enrollment by Class and Percent  
Fall 2006-Fall 2012**

Fall	Total	Freshmen		Sophomores		Juniors		Seniors		Unclassified	
		Count	Percent	Count	Percent	Count	Percent	Count	Percent	Count	Percent
2006	1,263	562	44	318	25	183	14	196	16	4	0
2007	1,267	448	35	338	27	207	16	270	21	4	0
2008	1,385	553	40	306	22	241	17	280	20	5	0
2009	1,542	693	45	358	23	239	15	248	16	4	0
2010	1,601	777	49	332	21	241	15	251	16	0	0
2011	1,453	572	39	354	24	240	17	287	20	0	0
2012	1,423	498	35	390	27	205	14	330	23	0	0

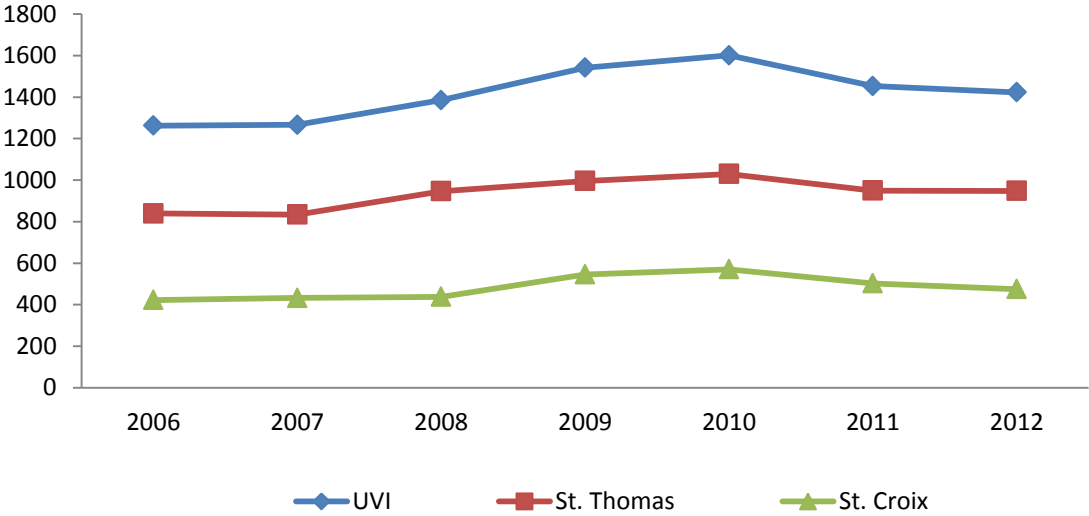
**Figure 2.5 UVI Full-Time Undergraduate Enrollment by Class  
Fall 2006-2012**



**Table 2.6 Full-Time Undergraduate Enrollment by Campus and Percentage Fall 2006-Fall 2012**

Fall	Total (UVI)	St. Thomas		St. Croix	
	Count	Count	Percentage	Count	Percentage
2006	1263	840	67	423	33
2007	1267	834	66	433	34
2008	1385	947	68	438	32
2009	1542	996	65	546	35
2010	1601	1030	64	571	36
2011	1453	950	65	503	35
2012	1423	948	67	475	33

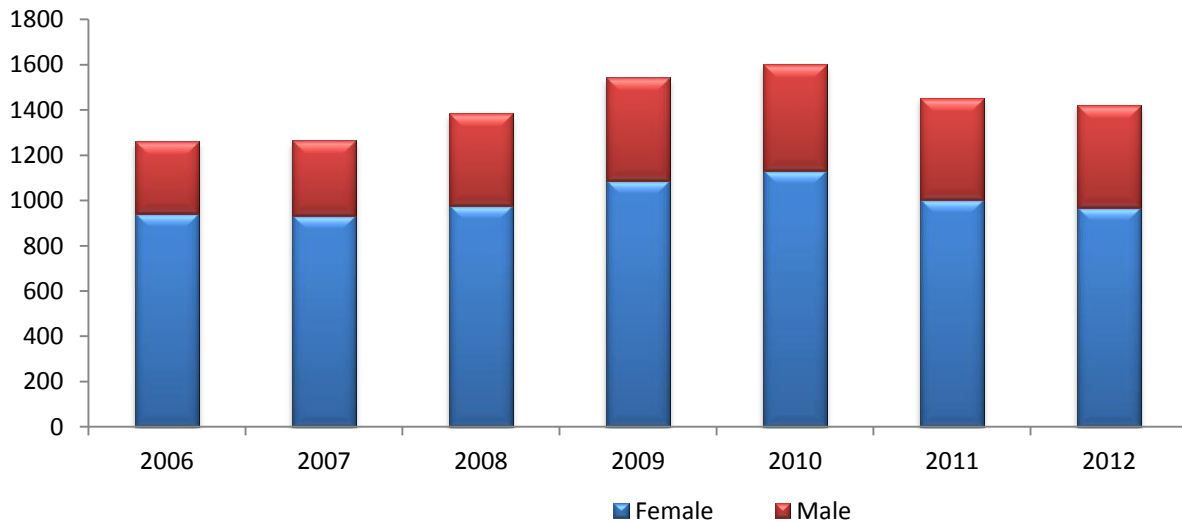
**Figure 2.6 Full-Time Undergraduate Enrollment by Campus Fall 2006-2012**



**Table 2.7 Full-Time Undergraduate Enrollment by Gender and Percentage  
Fall 2006-Fall 2012**

Fall	Total	Female		Male	
	Count	Count	Percentage	Count	Percentage
2006	1,263	941	75	322	25
2007	1,267	933	74	334	26
2008	1,385	977	71	408	29
2009	1,542	1087	70	455	30
2010	1,601	1132	71	469	29
2011	1,453	1005	69	448	31
2012	1,423	969	68	454	32

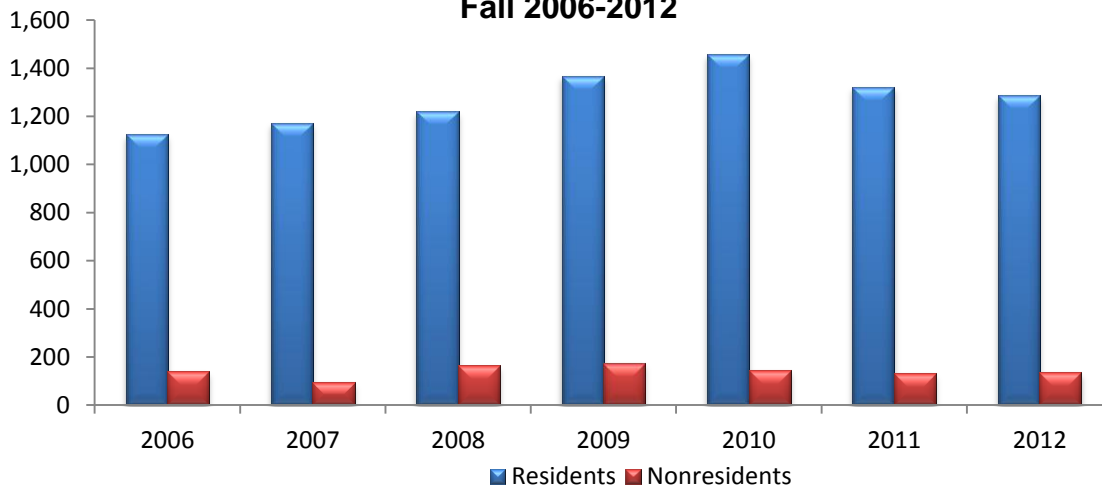
**Figure 2.7 UVI Full-Time Undergraduate Enrollment by Gender  
Fall 2006-2012**



**Table 2.8 Full-Time Undergraduate Enrollment by Residency and Percentage  
Fall 2006-Fall 2012**

Fall	Total	Residents		Nonresidents	
	Full-time	Count	Percentage	Count	Percentage
2006	1,263	1,123	89	140	11
2007	1,267	1,172	93	95	7
2008	1,385	1,221	88	164	12
2009	1,542	1,367	89	175	11
2010	1,601	1,456	91	145	9
2011	1,453	1,322	91	131	9
2012	1,423	1,287	90	136	10

**Figure 2.8 UVI Full-Time Undergraduate Enrollment by  
Residency  
Fall 2006-2012**





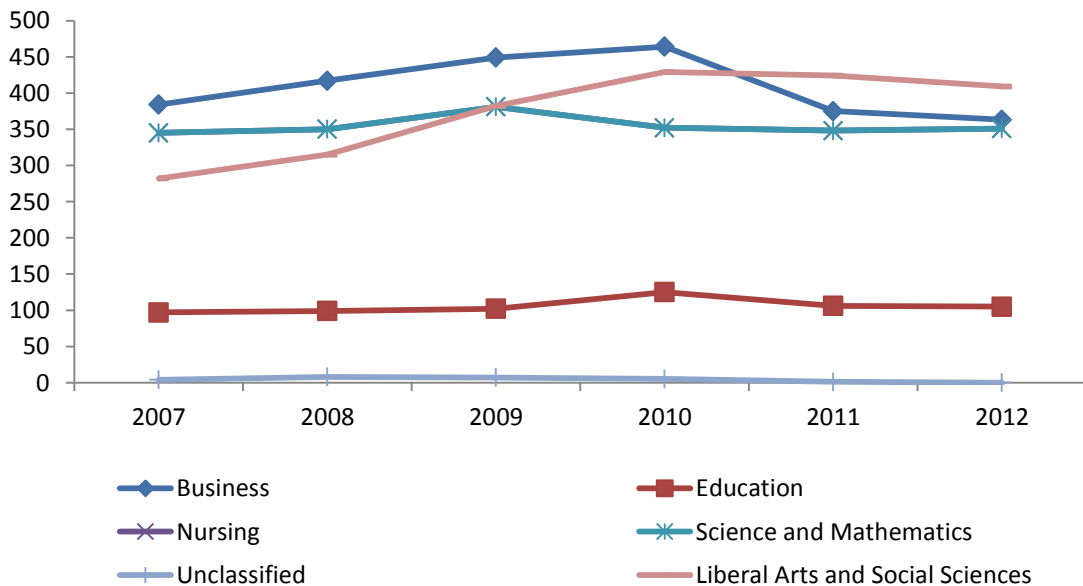
**Table 2.9 Full-Time Undergraduate Enrollment by Division  
Fall 2006-Fall 2011**

School/College	2007	2008	2009	2010	2011	2012
Business	384	417	449	464	375	363
Education	97	99	102	125	106	105
Nursing	155	196	221	226	199	195
Science and Mathematics	345	350	381	352	348	351
Liberal Arts and Social Sciences	282	315	382	429	424	409
Unclassified**	4	8	7	5	1	0
<b>Total</b>	<b>1,267</b>	<b>1,385</b>	<b>1,542</b>	<b>1,601</b>	<b>1,453</b>	<b>1,423</b>

\* As of Fall 2005, the Social Sciences and Humanities Division have been combined.

\*\* Unclassified includes undecided and no major code assigned.

**2.9 Full-Time Undergraduate Enrollment by Division  
Fall 2007-Fall 2012**



**Table 2.10 Full-Time Undergraduate Enrollment by Schools or Colleges and Major  
Fall 2006-Fall 2012**

College/School	2006	2007	2008	2009	2010	2012
<b>Business</b>						
Accounting	119	110	115	116	94	71
Business Administration	238	218	257	287	312	227
Business Management	27	26	27	21	31	23
Computer Information Systems	26	23	17	25	26	20
Hotel and Restaurant Management	4	7	1	0	1	22
<b>Education</b>						
Elementary Education	89	83	70	69	70	38
Inclusive Early Childhood Education	24	14	29	66	29	25
Pre-Education	*	*	*	*	26	43
<b>Liberal Arts and Social Sciences</b>						
Communication	18	14	25	26	34	46
Criminal Justice	*	1	25	60	77	103
English	20	28	23	14	15	17
Humanities	10	14	6	12	9	4
Music; Music Education	10	8	9	17	15	17
Police Science and Administration	20	9	11	6	4	0
Psychology	74	74	87	96	110	107
Social Sciences	25	31	24	22	23	11
Social Work	9	12	10	12	9	20
Speech Communication and Theater	3	4	2	2	1	1
<b>Nursing</b>						
Nursing	112	117	144	148	103	53
Nursing Education	19	38	52	73	60	14
Pre-Nursing	*	*	*	*	63	127
<b>Science and Mathematics</b>						
Applied Mathematics	31	35	39	42	64	91
Biology	125	137	130	126	118	113
Chemistry	19	21	21	26	22	19
Computer Science	60	65	63	80	68	67
Marine Biology	30	26	26	22	27	37
Mathematics	19	22	20	21	18	13
Physics	0	1	1	0	0	0
Process Technology	32	38	50	64	35	10

\*Program not offered