



Key Performance Indicators (KPIs) Mid-Year Report

University of the Virgin Islands
Board of Trustees Meeting
March 12, 2005

Prepared by:
Office of Institution Research and Planning



Spring 2005 – Mid-Year Report

- Key Performance Indicators
 - Spring Enrollment
 - Financial
 - Research
 - Development
 - Facilities

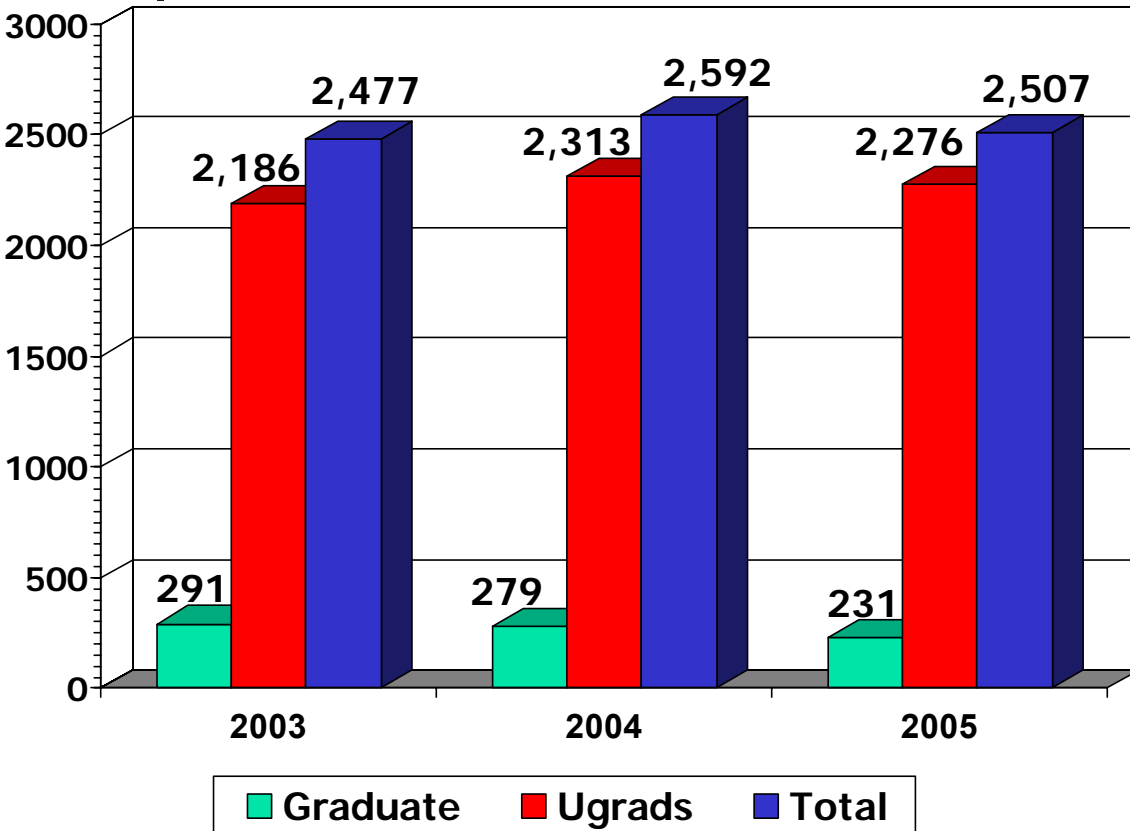


Enrollment Indicators

Spring 2005

Undergraduate & Graduate Enrollment

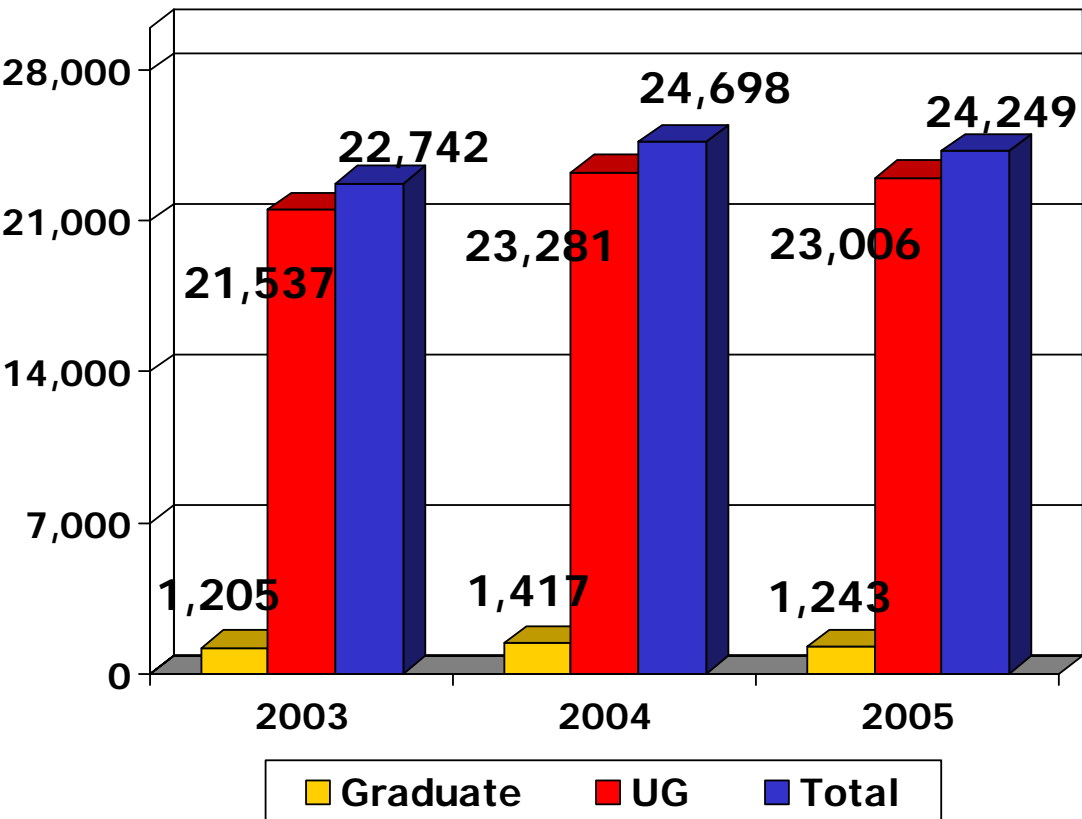
Spring 2003-2005



- Total UG/G Spring 2005 Enrollment Down 3.3% from Spring 2004
 - Fewer Applications
 - Decline in Part-time Retention on St Croix (34%/ Fall 2004)
 - Need to improve Admission Process
 - Fewer Graduate Cohort Programs (e.g. St. Marteen)
- Undergraduate down 1.6%
- Graduate down 17%

Student Credit Hours (All)

Spring 2003-2005



■ Credit Hours for Spring 2005 Down 1.8% from Spring 2004

■ No Fiscal Impact on UVI – due to increase in tuition + fees

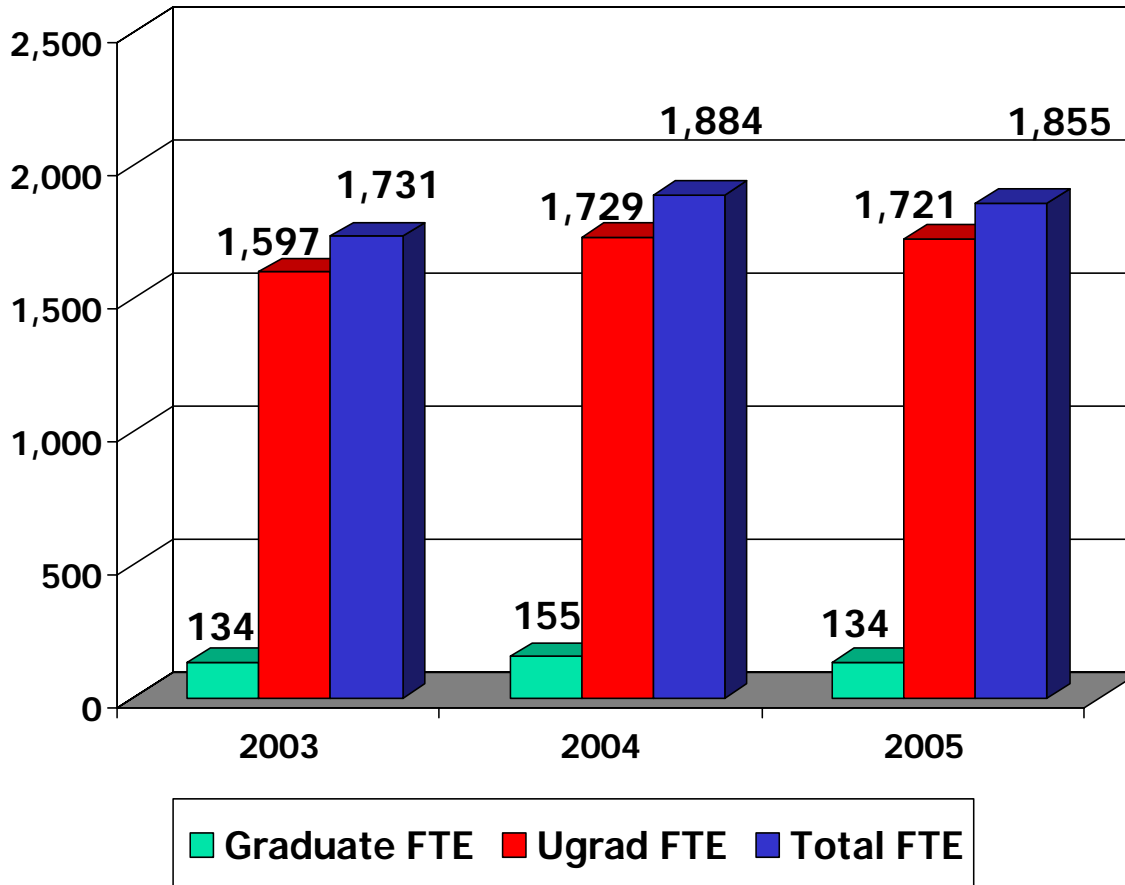
■ Undergraduate down 1.2%
 ■ St Croix down 4%
 ■ St Thomas up 1.2%

■ Graduate down 12.3%
 ■ St Croix down 13.5%
 ■ St Thomas down 11.5%

St Thomas Campus: St. Thomas + BVI + Distance Learning

FTE – UG & Graduate Enrollment

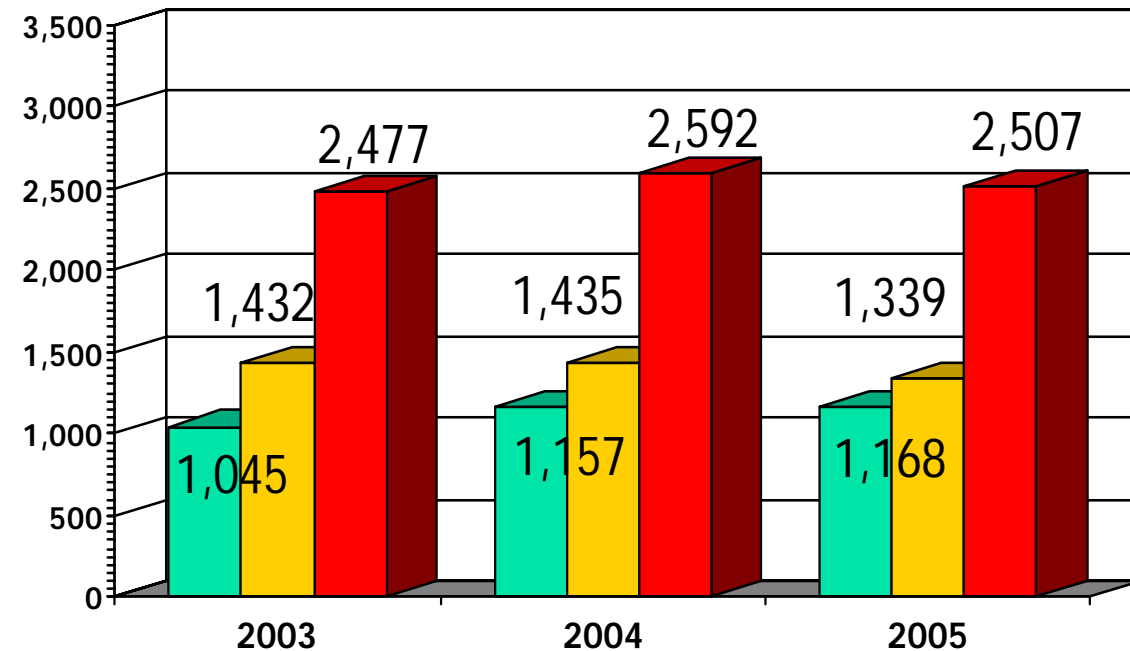
Spring 2003-2005



- Total FTE for Spring 2005 down 1.5% over Spring 2004
- Undergraduate FTE (12hrs) down 0.5% over Spring 2004
- Graduate FTE (9hrs) down 13.5% over Spring 2004

Enrollment - Full vs. Part-Time (All)

Spring 2003-2005

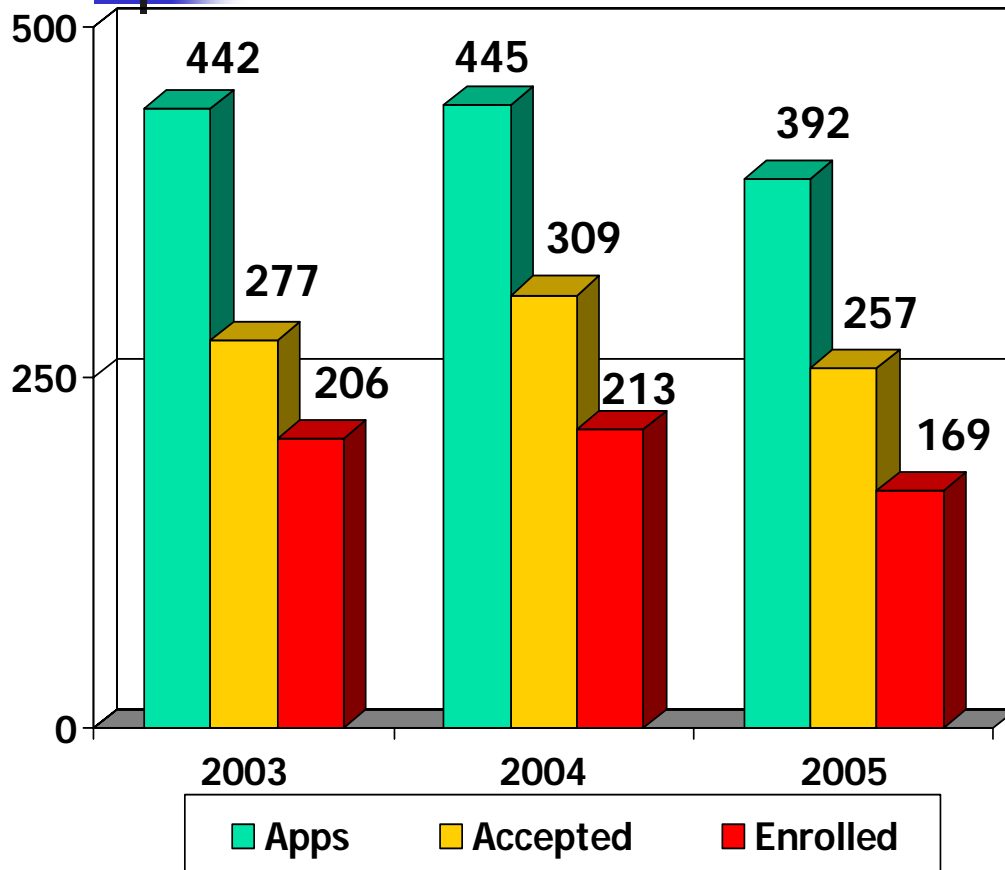


■ Full-Time ■ Part-Time ■ Total

- **FT for Spring 2005 Up 1% over Spring 2004**
 - St Croix down, 1.97%
 - St Thomas up, 2.5%
- **PT Down for Spring 2005, 6.7% over Spring 2004**
 - St Croix down, 10.97 %
 - St Thomas down, 2.98 %
- **Full v Part time ratio**
 - 2005: 1:1.15
 - 2004: 1:1.24
 - 2003: 1:1.37

Admissions – New Student Activity

Freshmen & Transfers Spring 2003 - 2005



- Spring 2005 Yield 66%
Spring 2004 Yield 69%
Spring 2003 Yield 63%
- Freshmen for Spring 2005
Down 13.3% Over
Spring 2004
- Enrolled v. Acceptance ratio
 - 2005: 1:1.52
 - 2004: 1:1.45
 - 2003: 1:1.34
- Transfers for Spring 2005
Down 2.63% Over Spring
2004
 - 37 Transfers in Spring 2005
 - 31 Transfers in Spring 2000



Student Indicators



Student Profile

Spring 2005 vs. 2004

- 77% Female UG's, no change
- 23% Males UG's, no change
- Average Age - Undergraduates
 - FT = 22.1 Yrs, Down from 23 Yrs
 - PT = 31.2 Yrs Down from 32.8 Yrs
- Residency (All)
 - In-Territory = 91%, down from 93%
 - Out-of-Territory = 9%, up from 7%



Student Profile

Spring 2005 vs. 2004

- Ethnicity (All)
 - Black - 74%, Down from 76%
 - Hispanic - 5.5%, Down from 5.7%
 - White - 5.5%, Down from 5.6%
 - NR Alien - 7.8%, Up from 7.3%
 - Asian – Less than 1%
 - American Indian, Less than 1%
 - Other – 5.9%, Up from 4%

- New Freshmen
 - 65 % Taking Skills vs. 72 % in Spring 2004

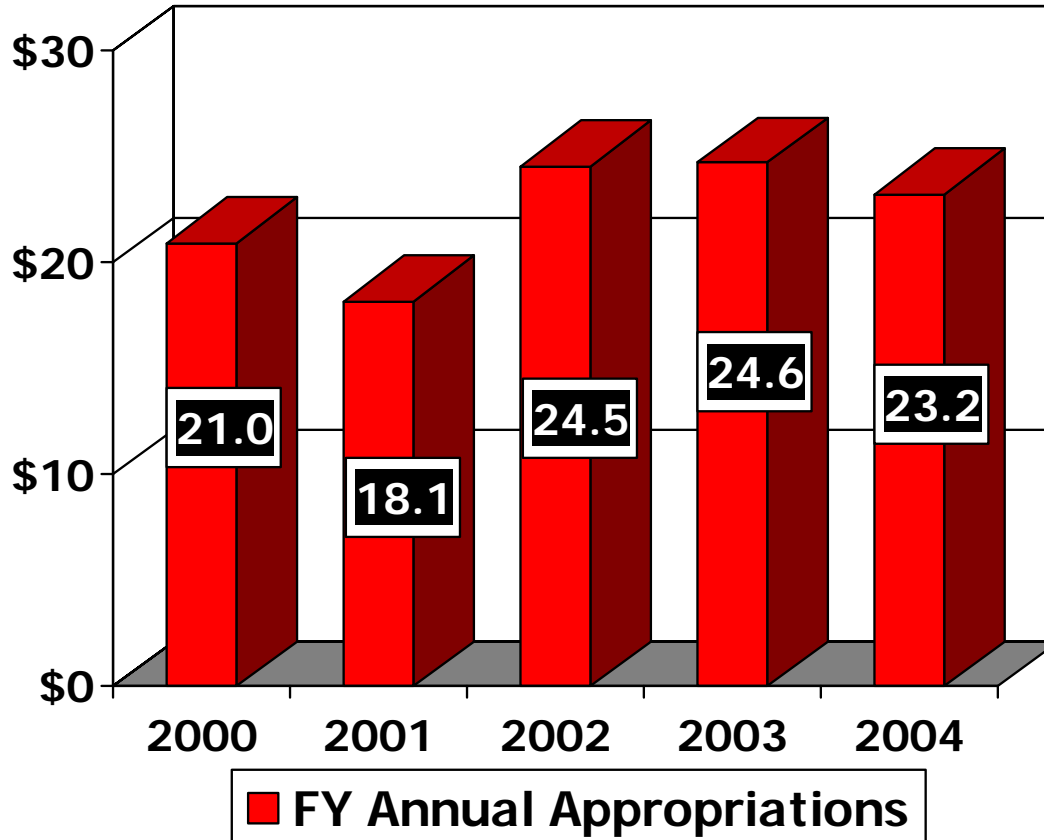
- Student/Faculty Ratio
 - 12:1 (Est.)



Financial Indicators

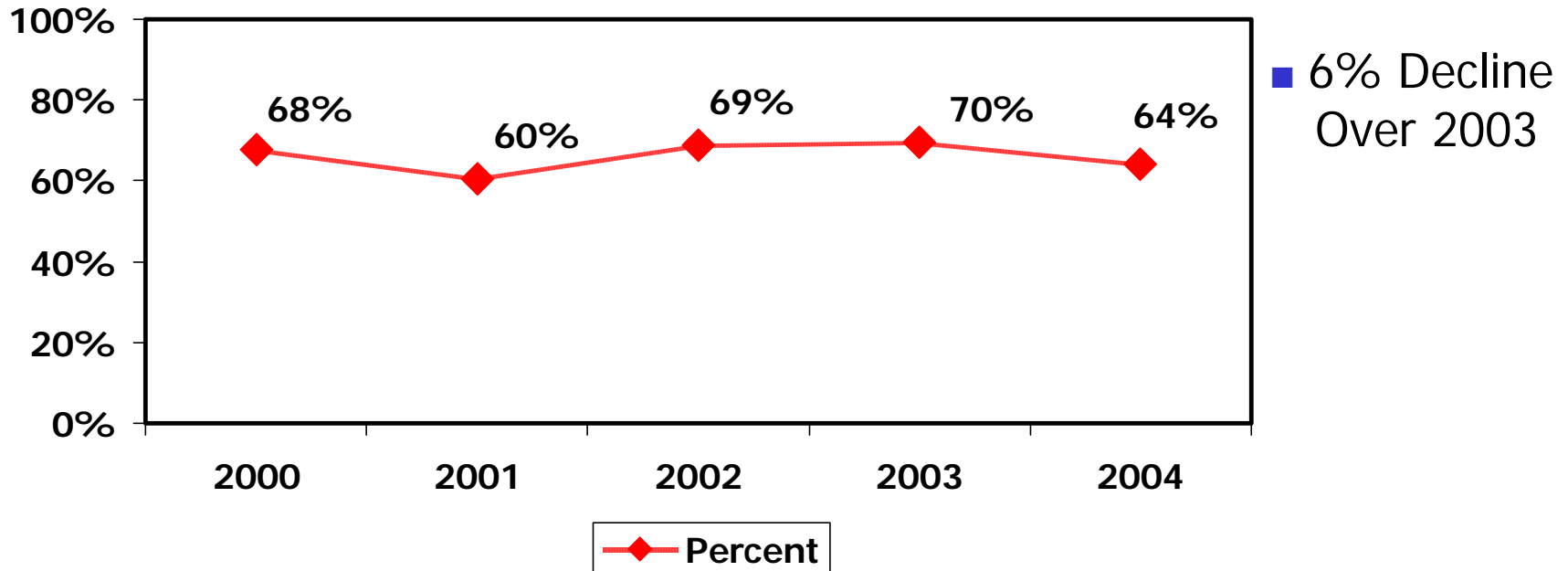
VI Operating Appropriations

Millions



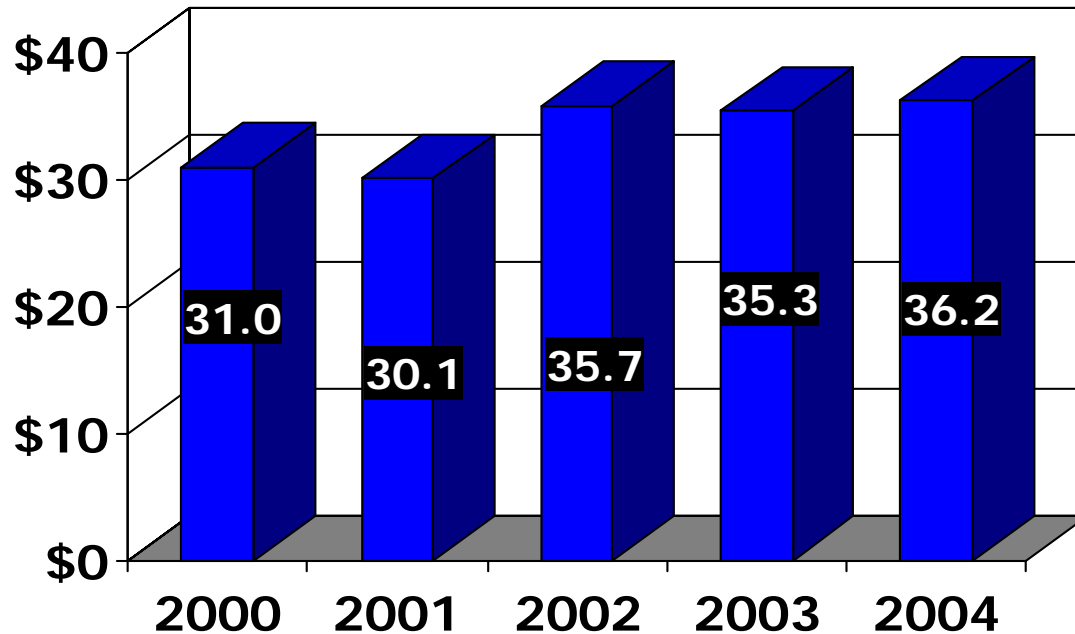
■ 5.69% Decline Over 2003

Ratio of VI Appropriations to Operating Budget



Total Operating Budget

Millions



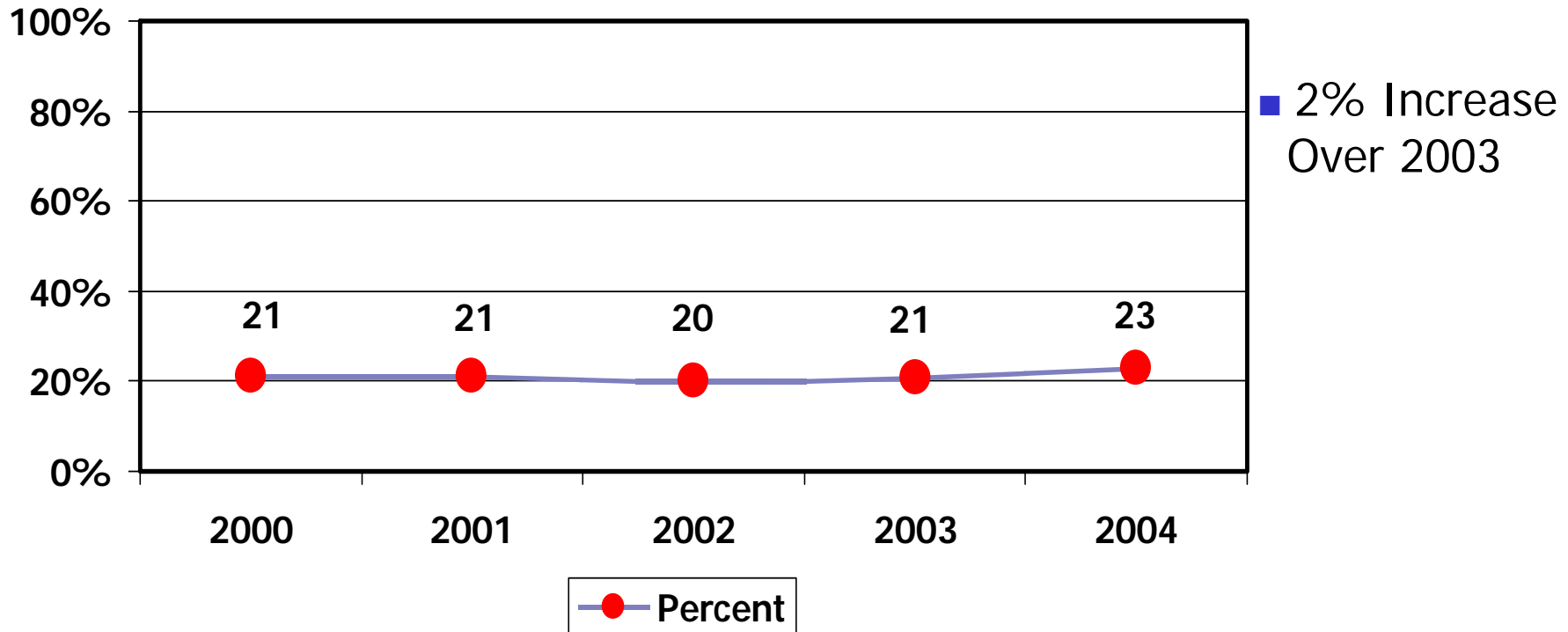
■ FY Annual Budget

- 2.5% increase from 2003
- As VI reduces support, UVI has contributed more through tuition + fee increases

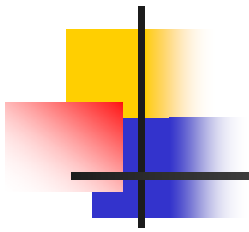
- **Peers – 2001-2003***
UVI ranked
2003 - #8
2002 - #6
2001 - #5

(*based on subset)

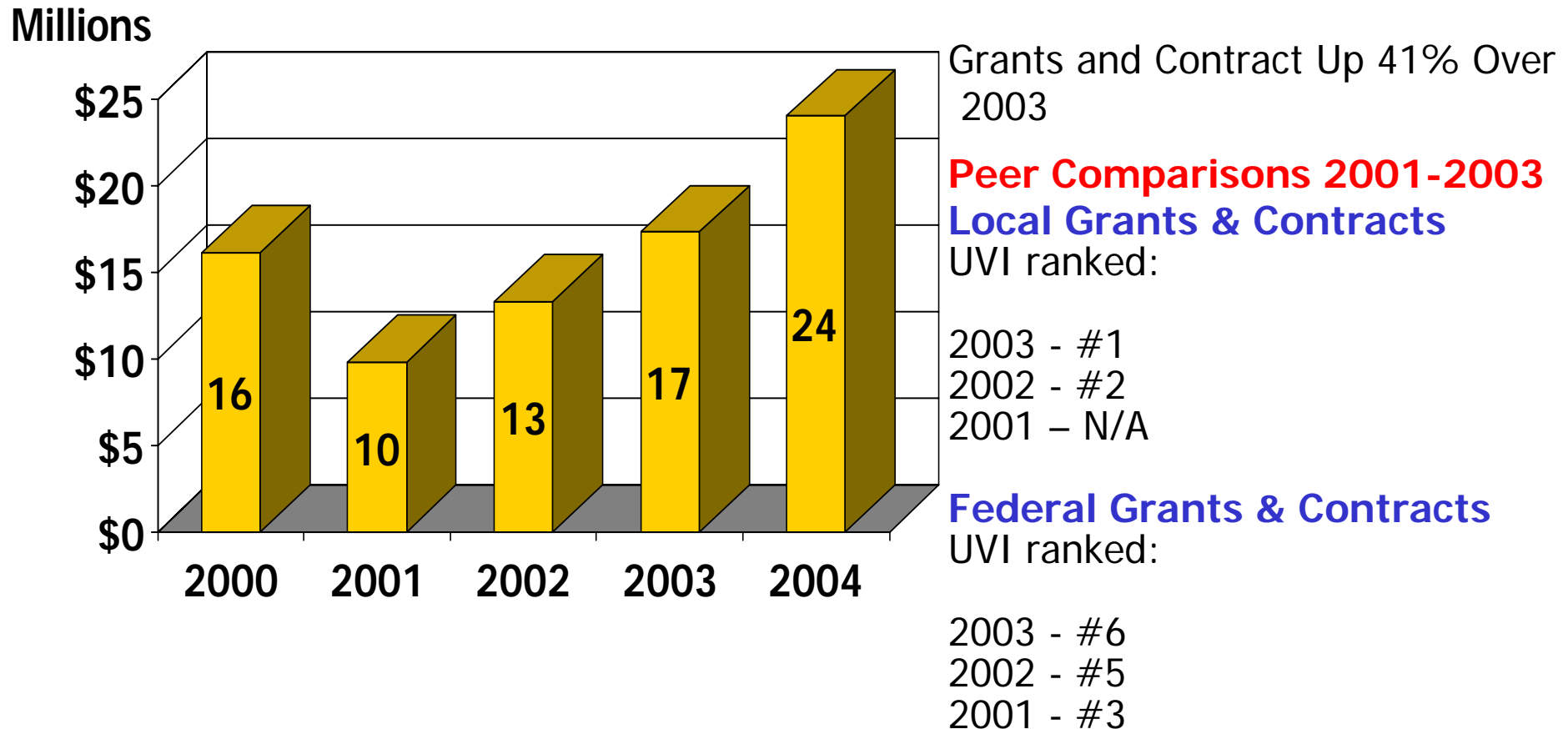
Ratio of Tuition & Fees to Total Operating Budget



Research Indicators



Externally Funded Grants and Contracts (Includes Federal and Local)





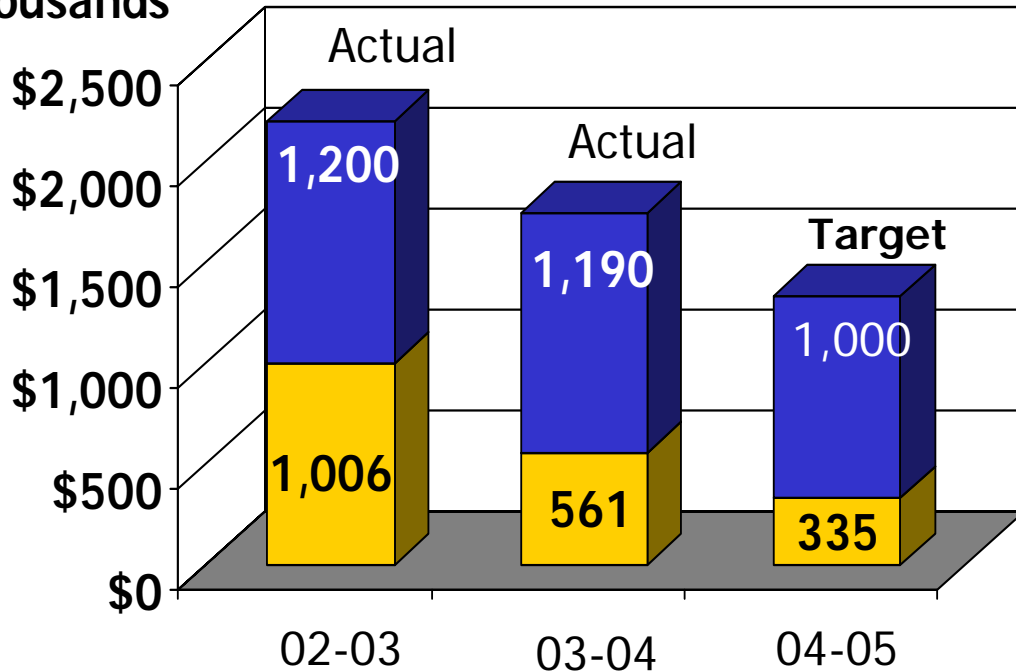
Development

Annual Fund Contributions

2002-03 to 2004-05

Actual/Target - Year-to-Date (9/1 to 02/15)

Thousands

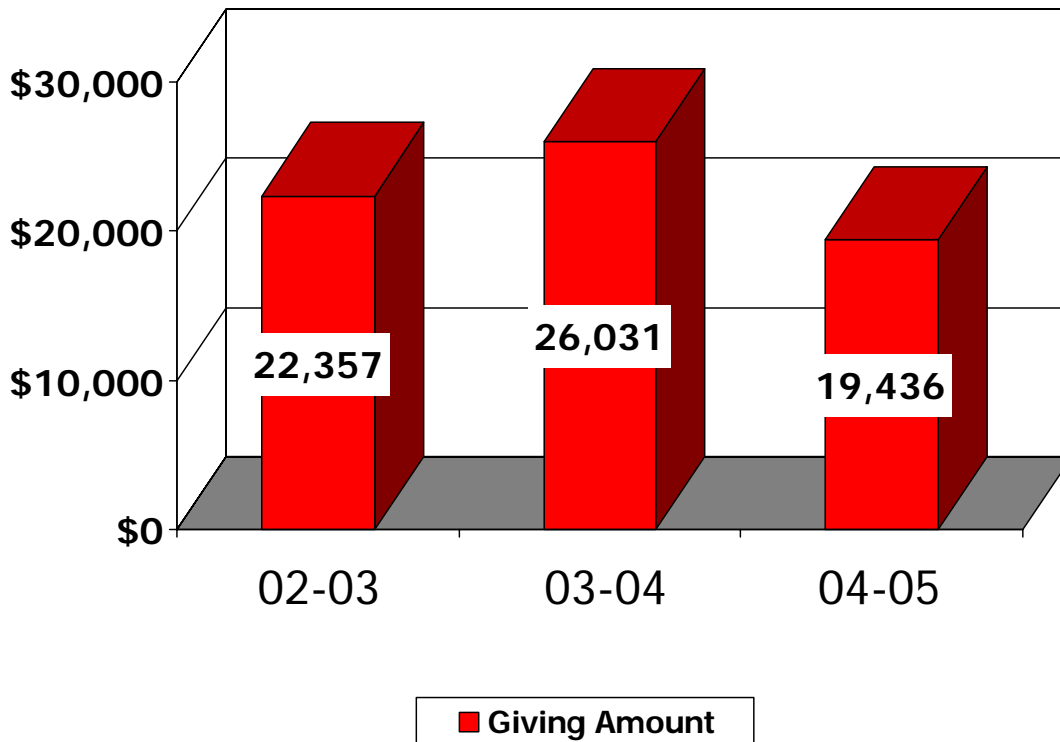


■ Sept 2004. – Feb. 2005

■ Decline 40% of year-to-date activity over 2003-04

Alumni Contributions

2002-03 to 2004-05
(9/1 to 02/15)



- **Sept. 2004 – Feb. 2005**

- **Average Gift Up:
80% over 03-04**

- \$19,436 contribution
- Avg. Gift = \$262

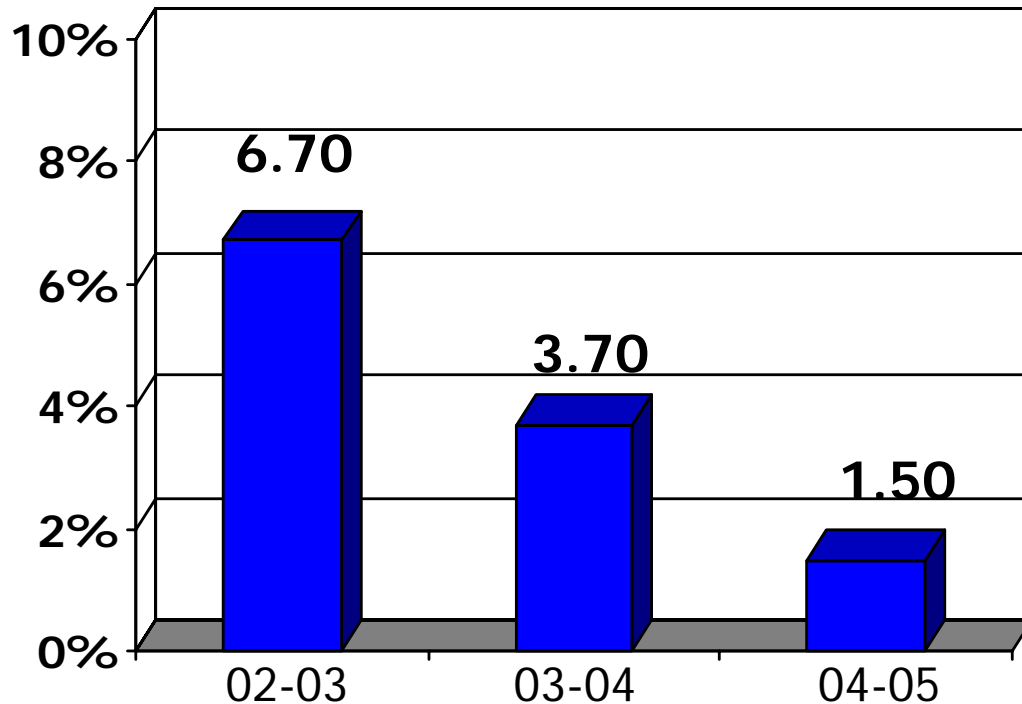
- **Sept. 2003 – Feb. 2004**

- \$26,031 contribution
- Avg. Gift = \$145

% Alumni Who Contribute

2002-03 to 2004-05

(9/1 to 02/15)



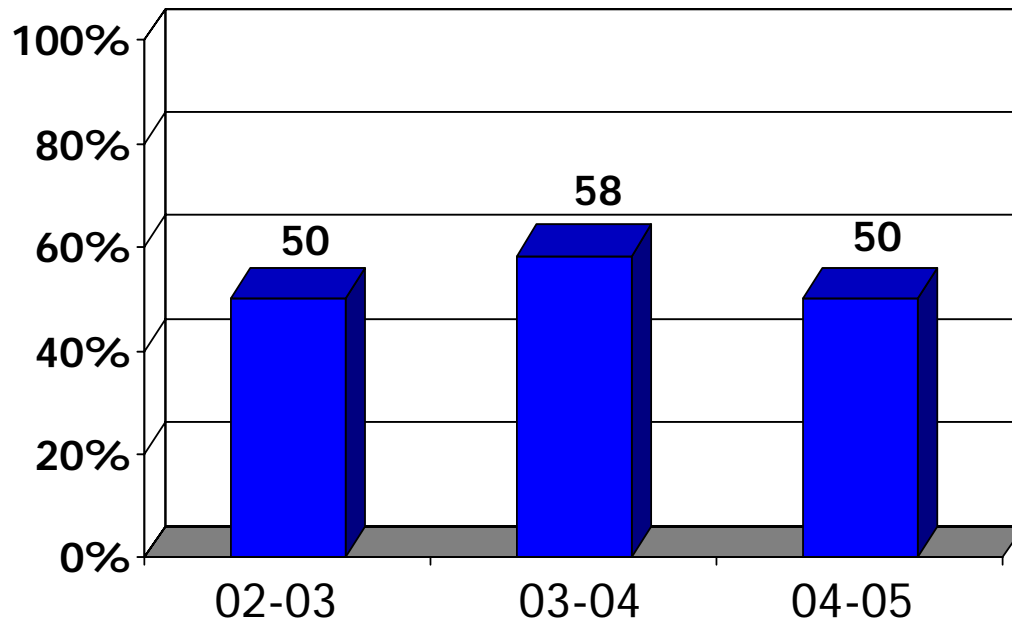
■ Percent Giving

- **Sept. 2004 – Feb. 2005**
 - Decline 2.2% over 03/04
 - Number of Alumni who have contributed: 74
- **Sept. 2003 - Feb. 2004**
 - Decline 3% over 02/03
 - Number of Alumni who have contributed: 180

% Trustees Who Contribute

2002-03 to 2004-05

(9/1 to 02/15)



■ Percent Giving

■ Sept. 2004 – Feb. 2005:
Giving, \$9,148

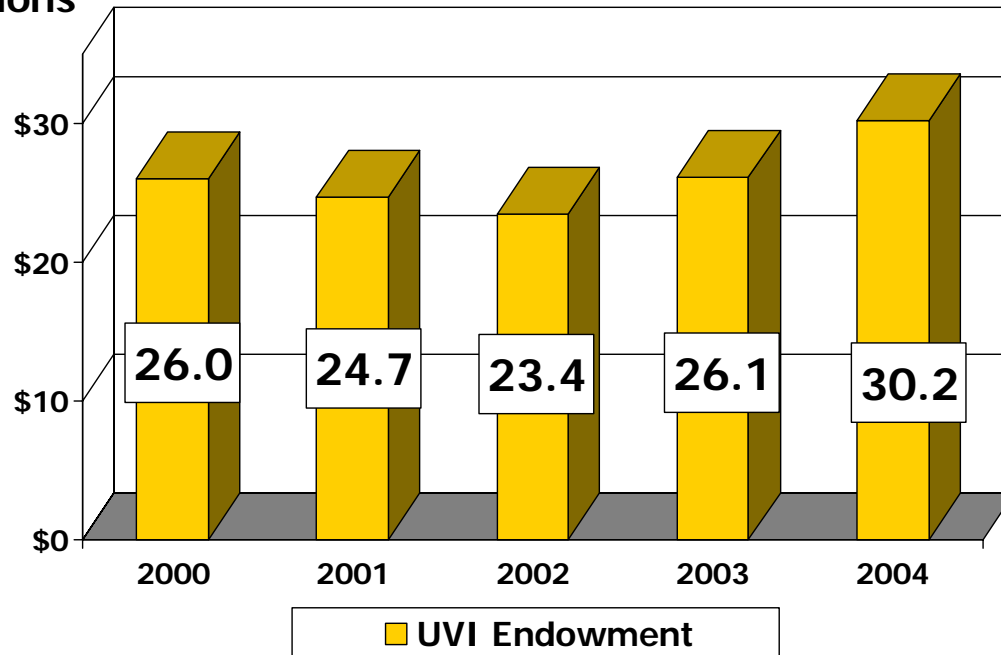
- 7/14 or 50%
- Avg. Contribution: \$1,307

■ Sept. 2003 – Feb. 2004
Giving, \$7,200

- 7/12 or 58%
- Avg. Contribution: \$1,029

Endowment Market Value

Millions



15.7% increase over 2000

Peer Analysis 2001-2003

UVI ranked:

2003 - #1

2002 - N/A

2001 - N/A

2004 is an un-audited report

Facilities Maintenance*

- **Volume of Deferred Maintenance**

- 1999 - \$27M
- 2001 - \$17M
- 2004 - \$ 7M

- **Physical Condition of Facilities**

- Classrooms
 - 1999 – Poor
 - 2004 – Very Good

- **Physical Condition of Facilities**

- Faculty Offices
 - 1999 – Fair
 - 2004 – Good
- Dormitories
 - 1999 – Poor/Fair
 - 2004 – Very Good
- Assembly Halls/Grounds
 - 1999 – Fair
 - 2004 – Very Good
- Faculty/Admin Residences
 - 1999 – Fair
 - 2004 – Good

*Based on 1999 Facilities Needs Assessment



Appendix A

UVI vs. Peer Institutions

- Peer Institutions
 - 21 Universities
 - Enrollment Less Than 5,000
 - Public, State Supported
 - 10 HBCU's
 - 2 Islands Universities – Guam, Hawaii

Appendix B

UVI Peer Institutions (21)

■ ALBANY STATE UNIVERSITY	■ MISSISSIPPI UNIVERSITY FOR WOMEN
■ ALCORN STATE UNIVERSITY	■ MISSISSIPPI VALLEystate UNIVERSITY
■ COPPIN STATE UNIVERSITY	■ SAVANNAH STATE UNIVERSITY
■ DELAWARE STATE UNIVERSITY	■ SUL ROSS STATE
■ EASTERN NEW MEXICO UNIV.-MAIN CAMPUS	■ THE UNIVERSITY OF TEXAS OF THE PERMIAN BASIN
■ ELIZABETH CITY STATE UNIVERSITY	■ UNIVERSITY OF GUAM
■ FORT VALLEY STATE UNIVERSITY	■ UNIVERSITY OF HAWAII AT HILO
■ FRANCIS MARION UNIVERSITY	■ UNIVERSITY OF MONTEVALLO
■ INTER AMERICAN UNIVERSITY OF PUERTO RICO*	■ UNIVERSITY OF NORTH CAROLINA AT PEMBROKE
■ KENTUCK STATE UNIVERSITY	■ WINSTON-SALEM STATE UNIVERSITY



Thank you!

Office of Institutional Research and Planning