

Section 4

Graduates And Degrees Conferred

**Table 4.1 2001 Degrees Conferred
By Division and Campus**

Division	Associate	Bachelors	Masters	All Degrees
UVI				
Business Administration	43	108	26	177
Education	5	43	23	71
Humanities	0	12	0	12
Nursing	3	13	0	16
Science and Mathematics	3	26	0	29
Social Sciences	11	18	3	32
All Divisions	65	220	52	337
St. Thomas				
Business Administration	29	73	14	116
Education	0	17	11	28
Humanities	0	9	0	9
Nursing	0	13	0	13
Science and Mathematics	2	25	0	27
Social Sciences	8	18	1	27
All Divisions	39	155	26	220
St. Croix				
Business Administration	14	35	12	61
Education	5	26	12	43
Humanities	0	3	0	3
Nursing	3	0	0	3
Science and Mathematics	1	1	0	2
Social Sciences	3	0	2	5
All Divisions	26	65	26	117

**Table 4.2 St. Thomas Campus 2001 Degrees Conferred
By Division and Major**

Division	Associate	Bachelors	Masters	All Degrees
Business Administration	29	73	14	116
Accounting	8	25	•	33
Business Administration	•	48	14	62
Business Management	14	•	•	14
Computer Information Systems	6	•	•	6
Hotel/Restaurant Management	1	•	•	1
Office Systems/Administration	0	•	•	0
Education	0	17	11	28
Elementary Education	0	17	•	17
Education	•	•	11	11
Humanities	•	9	•	9
English	•	4	•	4
Humanities	•	1	•	1
Music Education	•	4	•	4
Speech, Communication and Theater	•	0	•	0
Nursing	0	13	•	13
Science and Mathematics	2	25	•	27
Biology	•	8	•	8
Chemistry	•	2	•	2
Chemistry w/Physics	0	1	•	1
Computer Science	1	4	•	5
Marine Biology	•	3	•	3
Mathematics	•	7	•	7
Physics	1	•	•	1
Social Sciences	8	18	1	27
Police Science and Administration	8	•	•	8
Psychology	•	8	•	8
Social Sciences	•	10	•	10
Social Work	•	0	•	0
Public Administration	•	•	1	1
All Majors	39	155	26	220

• Degree not offered

**Table 4.3 St. Croix Campus 2001 Degrees Conferred
By Division and Major**

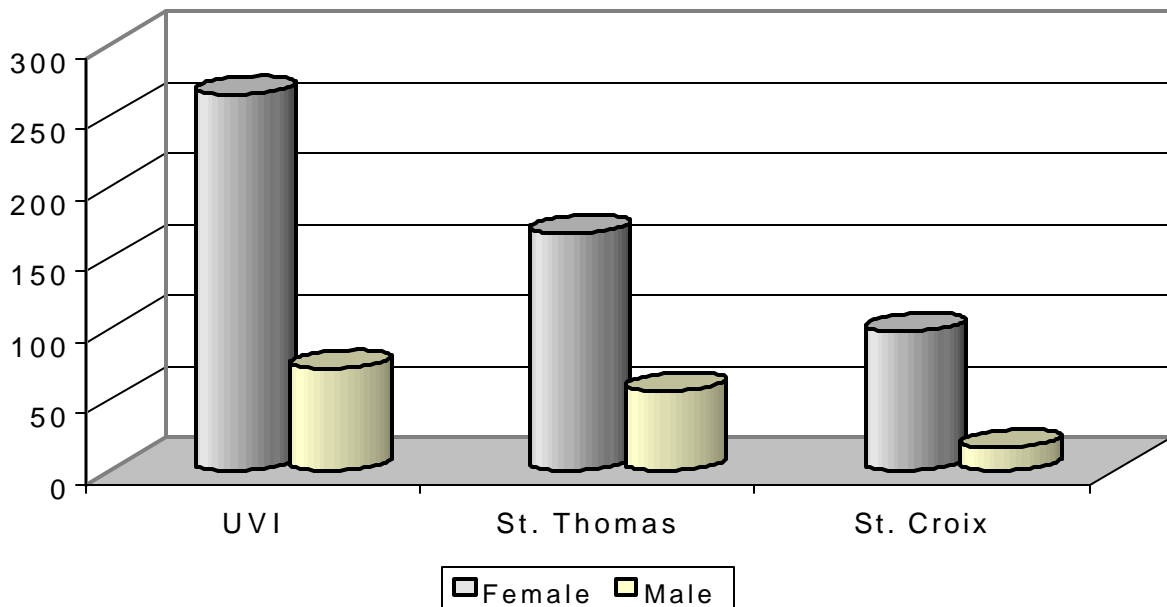
Division	Associate	Bachelors	Masters	All Degrees
Business Administration	14	35	12	61
Accounting	2	12	•	14
Business Administration	•	23	12	35
Business Management	8	•	•	8
Computer Information System	1	•	•	1
Office Systems/Administration	3	•	•	3
Education	5	26	12	43
Elementary Education	5	26	•	31
Education	•	•	12	12
Vocational Education	0	0	•	0
Nursing	3	-	-	3
Humanities	-	3	-	3
English	•	3	•	3
Science and Mathematics	1	1	-	2
Computer Science	1	1	•	2
Social Sciences	3	-	2	5
Police Science Administration	3	•	•	3
Public Administration	•	•	2	2
All Majors	26	65	26	117

• Degree not offered

**Table 4.4 2001 Degrees Conferred
By Campus and Gender**

Gender	Associate	Bachelors	Masters	All Degrees
UVI				
Female	47	173	45	265
Male	18	47	7	72
Total	65	220	52	337
St. Thomas				
Female	26	117	21	164
Male	13	38	5	56
Total	39	155	26	220
St. Croix				
Female	21	56	24	101
Male	5	9	2	16
Total	26	65	26	117

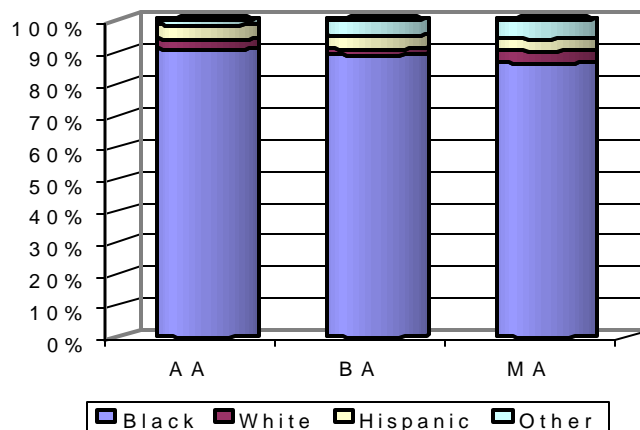
**Figure 4.1 2001 Degrees Conferred
By Campus and Gender**



**Table 4.5 2001 Degrees Conferred
By Campus and Ethnic Origin**

Degree	Black	White	Hispanic	Other	Total
UVI					
Associate	59	2	3	1	65
Bachelors	196	4	9	11	220
Masters	45	2	2	3	52
Total	300	8	14	15	337
St. Thomas					
Associate	37	1	1	0	39
Bachelors	143	4	0	8	155
Masters	22	1	1	2	26
Total	202	6	2	10	220
St. Croix					
Associate	22	1	2	1	26
Bachelors	53	0	9	3	65
Masters	23	1	1	1	26
Total	98	2	12	5	117

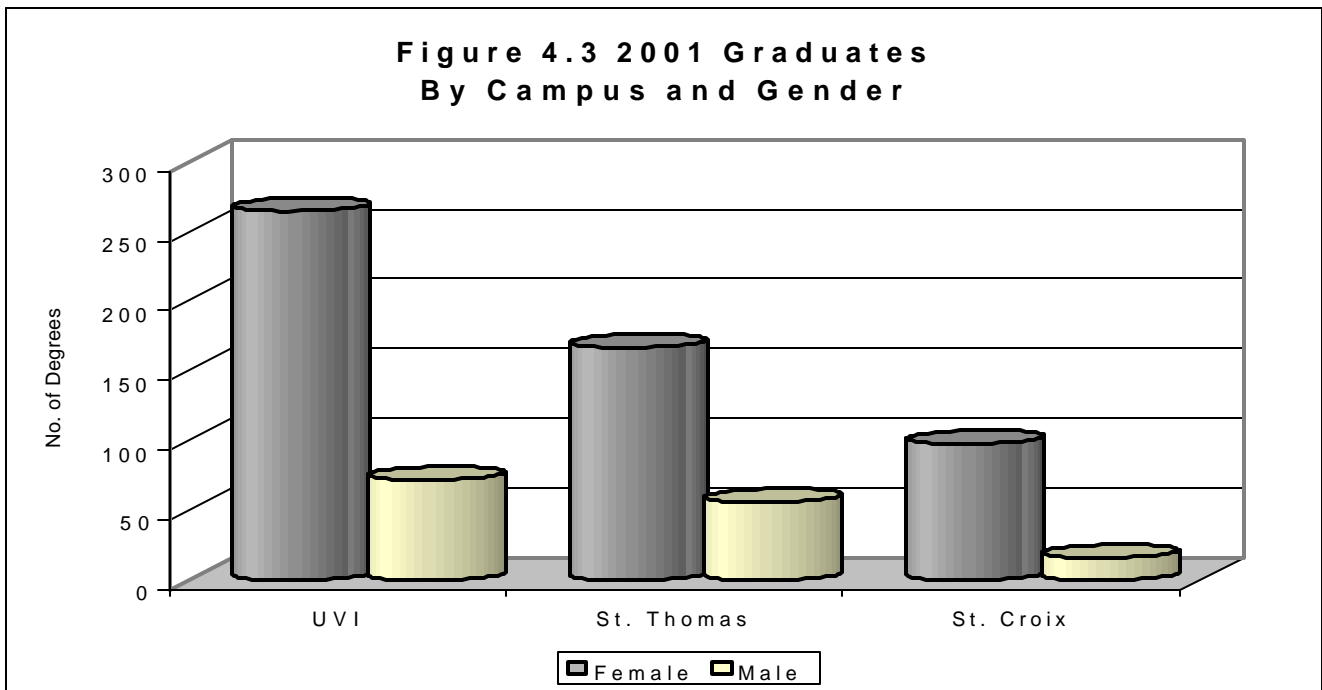
**Figure 4.2 UVI Degrees Conferred
By Ethnic Origin**



**Table 4.6 2001 Graduates
By Campus, Gender, and Ethnic Origin**

Gender	Black	White	Hispanic	Other	Total
UVI					
Female	237	5	11	12	265
Male	63	3	3	3	72
All	300	8	14	15	337
ST. Thomas					
Female	153	3	1	7	164
Male	49	3	1	3	56
All	202	6	2	10	220
St. Croix					
Female	84	2	10	5	101
Male	14	0	2	0	16
All	98	2	12	5	117

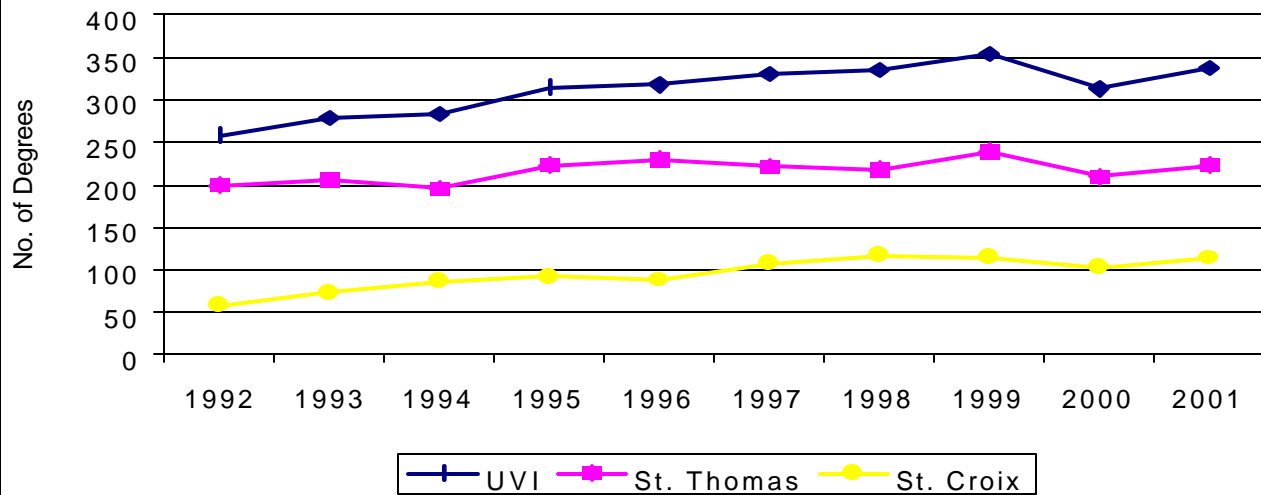
**Figure 4.3 2001 Graduates
By Campus and Gender**



**Table 4.7 Degrees Conferred
By Campus: 1992-2001**

Degree	1992	1993	1994	1995	1996	1997	1998	1999	2000	2001
UVI										
Associate	67	62	57	56	54	73	62	71	70	65
Bachelors	139	174	172	195	209	206	215	242	214	220
Masters	52	43	54	64	55	51	58	41	29	52
Total	258	279	283	315	318	330	335	354	313	337
ST. Thomas										
Associate	47	44	34	36	31	40	33	45	40	39
Bachelors	115	141	129	150	166	150	152	170	154	155
Masters	38	21	33	37	33	32	33	24	16	26
Total	200	206	196	223	230	222	218	239	210	220
ST. Croix										
Associate	20	18	23	20	23	33	29	26	30	26
Bachelors	24	33	43	45	43	56	63	72	60	65
Masters	14	22	21	27	22	19	25	17	13	26
Total	58	73	87	92	88	108	117	115	103	117

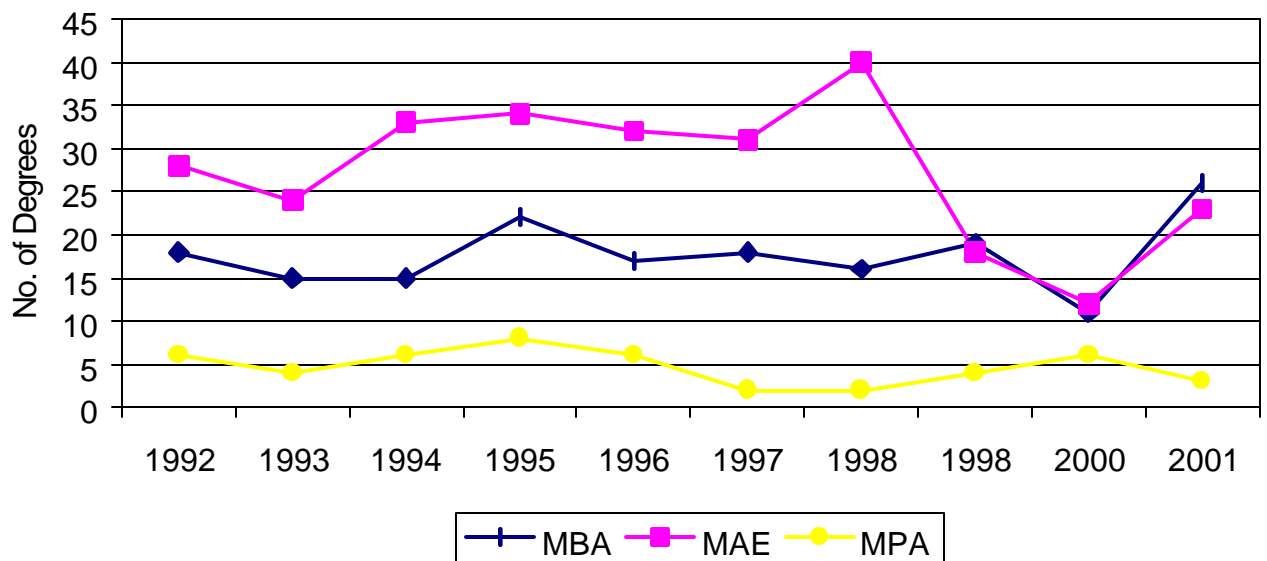
**Figure 4.4 Degrees Conferred
By Campus: 1992 - 2001**



**Table 4.8 UVI Masters Degrees Conferred
By Program: 1992-2001**

Division	1992	1993	1994	1995	1996	1997	1998	1998	2000	2001
Business Administration	18	15	15	22	17	18	16	19	11	26
Education	28	24	33	34	32	31	40	18	12	23
Public Administration	6	4	6	8	6	2	2	4	6	3
Total	52	43	54	64	55	51	58	41	29	52

**Figure 4.5 Masters Degrees Conferred
By Program 1992 - 2001**



**Table 4.9 2001 Graduates and Degrees Conferred
By Place of Residence**

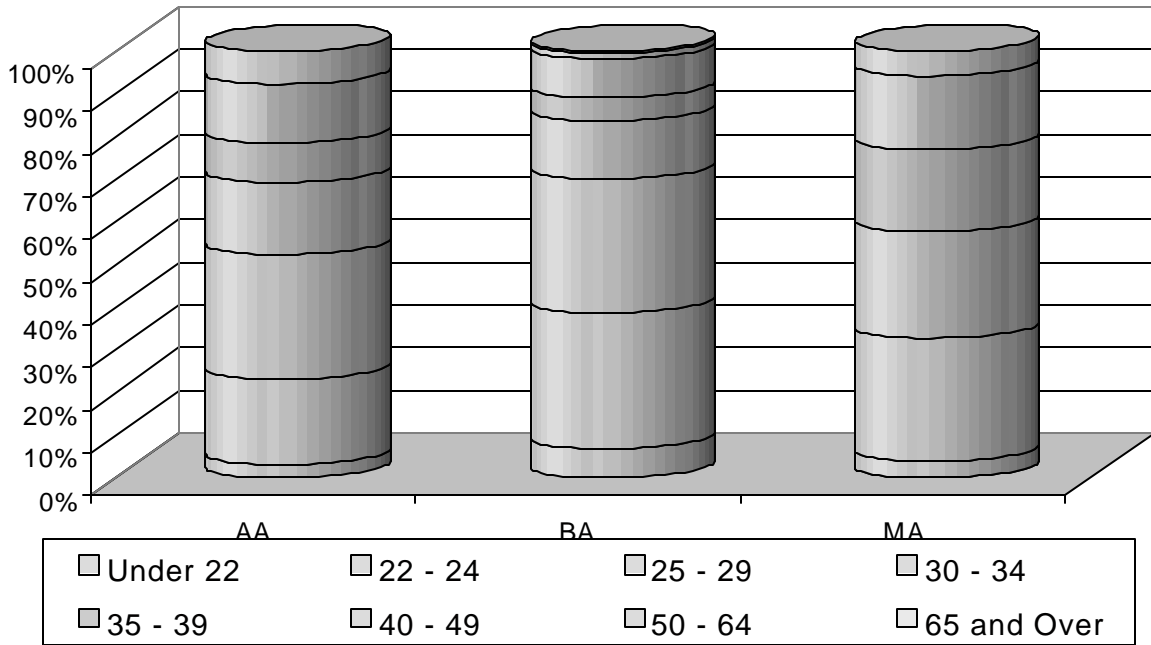
Place of Residence	Number of Graduates*	Associate	Bachelors	Masters	Total
VI Residents					
St. Thomas	155	32	114	25	171
St. Croix	121	27	73	26	126
St. John	6	2	3	1	6
All VI Residents	282	61	190	52	303
Non-VI Residents					
Anguilla	1	0	1	0	1
Antigua	1	0	1	0	1
BVI	7	0	7	0	7
Dominica	2	1	2	0	3
Grenada	1	0	1	0	1
Nevis	2	0	2	0	2
St. Kitts	9	2	9	0	11
St. Maarten	6	0	6	0	6
USA	2	1	1	0	2
All Non-VI Residents	31	4	30	0	35
All Areas	313	65	220	52	337

* Twenty-four individuals received two degrees.

**Table 4.10 2001 Graduates
By Campus, Degree and Age Group**

Age Group	Associate	Bachelors	Masters	Total
UVI				
Under 22	2	15	0	17
22 - 24	13	70	2	85
25 - 29	19	69	15	103
30 - 34	11	30	13	54
35 - 39	6	12	10	28
40 - 49	9	20	9	38
50 - 64	5	3	3	11
65 and Over	0	1	0	1
All age groups	65	220	52	337
St. Thomas				
Under 22	1	9	0	10
22 - 24	9	49	0	58
25 - 29	12	53	8	73
30 - 34	7	22	6	35
35 - 39	3	5	7	15
40 - 49	5	14	3	22
50 - 64	2	2	2	6
65 and Over	0	1	0	1
All age groups	39	155	26	220
St. Croix				
Under 22	1	6	0	7
22 - 24	4	21	2	27
25 - 29	7	16	7	30
30 - 34	4	8	7	19
35 - 39	3	7	3	13
40 - 49	4	6	6	16
50 - 64	3	1	1	5
65 and Over	0	0	0	0
All age groups	26	65	26	117

**Figure 4.6 UVI 2001 Graduates
By Degree and Age Group**



**Table 4.11 2001 Graduates
By Campus, Degree and Mean GPA**

Degree	UVI Mean GPA	Count	St. Thomas Mean GPA	Count	St. Croix Mean GPA	Count
Associate	2.81	65	2.79	39	2.84	26
Bachelors	2.95	220	2.96	155	2.92	65
Masters	3.61	52	3.68	26	3.55	26
All Degrees	3.02	337	3.01	220	3.04	117

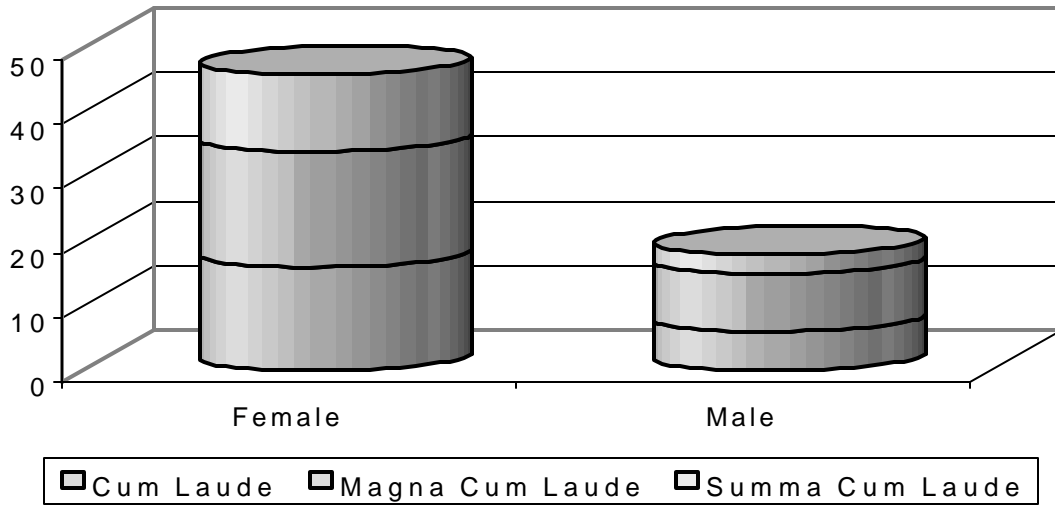
**Table 4.12 2001 Graduates
By Campus, Gender and Mean GPA**

Gender	UVI Mean GPA	Count	St. Thomas Mean GPA	Count	St. Croix Mean GPA	Count
All Levels						
Female	3.04	265	3.03	164	3.06	101
Male	2.95	72	2.96	56	2.95	16
All Genders	3.02	337	3.01	220	3.04	117
Undergraduate						
Female	2.92	220	2.94	143	2.90	77
Male	2.88	65	2.89	51	2.87	14
All Genders	2.91	285	2.93	194	2.90	91
Graduate						
Female	3.62	45	3.68	21	3.56	24
Male	3.61	7	3.65	5	3.49	2
All Genders	3.61	52	3.68	26	3.55	26

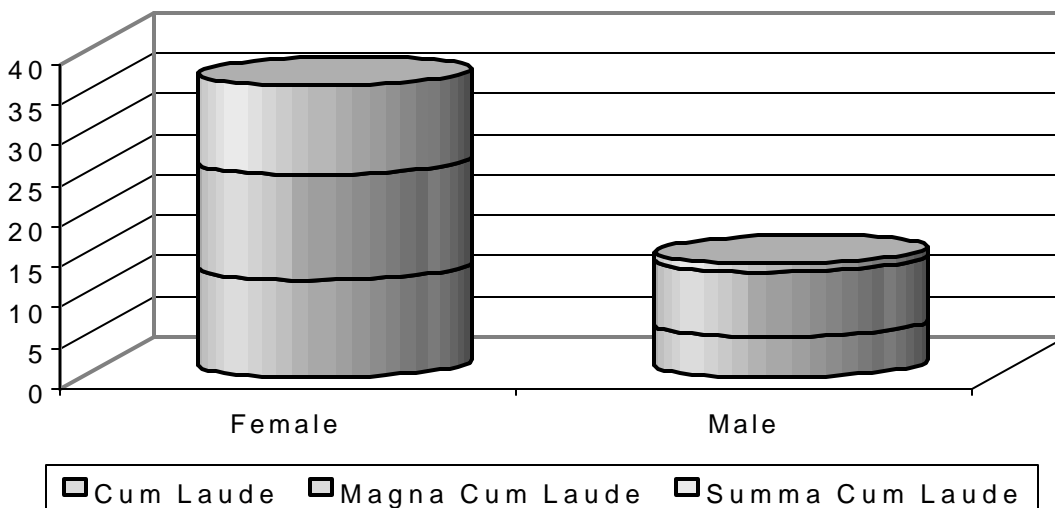
**Table 4.13 2001 Undergraduates
By Campus, Gender and Honors**

Type of Honor	Female	Male	All Genders
UVI			
Cum Laude	16	6	22
Magna Cum Laude	18	9	27
Summa Cum Laude	12	3	15
Total	46	18	64
St. Thomas			
Cum Laude	12	5	17
Magna Cum Laude	11	8	19
Summa Cum Laude	11	1	12
Total	34	14	48
St. Croix			
Cum Laude	4	1	5
Magna Cum Laude	7	1	8
Summa Cum Laude	1	2	3
Total	12	4	16

**Figure 4.7 UVI 2001 Honor Graduates
By Gender and Type of Honor**



**Figure 4.8 St. Thomas 2001 Honor Graduates
By Gender and Type of Honor**



**Figure 4.9 St. Croix 2001 Honor Graduates
By Gender and Type of Honor**

